



KOMITI RATONGA O TE AWA KAIRANGI HUTT VALLEY SERVICES COMMITTEE

1 March 2024

Order Paper for the meeting to be held in the
Council Chambers, 2nd Floor, 30 Laings Road, Lower Hutt,
on:

Friday 8 March 2024 commencing at 9:30 am

The meeting will be livestreamed on Council's Facebook page.

Members of the public wishing to speak to items on the agenda are asked to contact
democraticserviceteam@huttcity.govt.nz

Membership

Cr T Stallinger, HCC
Cr B Dyer, HCC
Cr Parkin, HCC
Cr N Shaw, HCC

Cr B Griffiths, UHCC
Mayor W Guppy, UHCC
Cr C Carson, UHCC
Cr H Newell, UHCC

Cr K Brown, HCC (Alternate)

Deputy Mayor H Swales, UHCC (Alternate)

For the dates and times of Council Meetings please visit www.huttcity.govt.nz

KOMITI RATONGA O TE AWA KAIRANGI | HUTT VALLEY SERVICES COMMITTEE (Joint Committee)

This is a joint committee of the Hutt City Council and Upper Hutt City Council.	
Membership:	Each Council appoints four [4] members and an alternate member who may act in the event that a regular member is absent. The Chair alternates annually between the two Councils, the change takes place after the final meeting of each year.
Meeting Cycle:	Hutt Valley Services Committee meets quarterly or as required.
Quorum:	Four [4] members, two [2] members of each Council
Delegated Authority:	To consider and make recommendations to the two Councils.

PURPOSE:

The Hutt Valley Services Committee is responsible for considering the coordination of activities of the two Councils in respect of matters affecting the Hutt Valley as a whole and waste disposal services in particular.

HUTT CITY COUNCIL

KOMITI RATONGA O TE AWA KAIRANGI HUTT VALLEY SERVICES COMMITTEE

Meeting to be held in the Council Chambers,
2nd Floor, 30 Laings Road, Lower Hutt on
Friday 8 March 2024 commencing at 9:30 am.

ORDER PAPER

PUBLIC BUSINESS

1. OPENING FORMALITIES - KARAKIA TIMATANGA

Whakataka te hau ki te uru
Whakataka te hau ki te
tonga
Kia mākinakina ki uta
Kia mātaratara ki tai
E hī ake ana te atakura
He tio, he huka, he hau hū
Tihei mauri ora.

*Cease the winds from the west
Cease the winds from the south
Let the breeze blow over the land
Let the breeze blow over the ocean
Let the red-tipped dawn come with a sharpened air.
A touch of frost, a promise of a glorious day.*

2. APOLOGIES

3. ELECTION OF CHAIR AND DEPUTY CHAIR

The Hutt Valley Services Committee, a joint Committee in terms of Schedule 7, clause 30, sub-clause 10 of the Local Government Act 2002, appoints its own Chair and Deputy Chair.

The Local Government (Wellington Region) Reorganisation Order 1989 requires that the Chair of the Hutt Valley Services Committee shall alternate annually between a member from the Hutt City Council and a member from the Upper Hutt City Council. In addition, as a matter of convention, the Deputy Chair has always been from a different Council than the Chair.

In 2023, the position of the Chair was held by Cr Griffiths from the Upper Hutt City Council and the Deputy Chair was held by Cr Stallinger from Hutt City Council.

It is now appropriate for the Committee to make new appointments until October 2024, with the position of Chair being filled by a member from Hutt City Council and the position of Deputy Chair being filled by a member from Upper Hutt City Council.

4. PUBLIC COMMENT

Generally up to 30 minutes is set aside for public comment (three minutes per speaker on items appearing on the agenda). Speakers may be asked questions on the matters they raise.

5. **CONFLICT OF INTEREST DECLARATIONS**

Members are reminded of the need to be vigilant to stand aside from decision making when a conflict arises between their role as a member and any private or other external interest they might have.

6. **MINUTES**

Meeting minutes Hutt Valley Services Committee, 24 November 2023 5

7. **WASTEWATER JOINT VENTURE UPDATE - 1 NOVEMBER 2023 TO 31 JANUARY 2024**

Report No. HVSC2024/1/57 by the Strategic Advisor, Hutt City Council 17

8. **UPDATE ON SILVERSTREAM LANDFILL AND RESOURCE RECOVERY**

Report No. HVSC2024/1/20 by the Manager Waste Minimisation, Hutt City Council 32

9. **AKATĀRAWA CEMETERY UPDATE**

Report No. HVSC2024/1/21 by the Parks and Reserves Manager, Upper Hutt City Council 39

10. **HUTT VALLEY SERVICES COMMITTEE FORWARD PROGRAMME 2024**

Report No. HVSC2024/1/22 by the Senior Democracy Advisor, Hutt City Council 42

11. **CLOSING FORMALITIES - KARAKIA WHAKAMUTUNGA**

Unuhia!	<i>Release us from the supreme sacredness of our</i>
Unuhia!	<i>tasks</i>
Unuhia i te uru-tapu-nui	<i>To be clear and free</i>
Kia wātea, kia māmā	<i>in heart, body and soul in our continuing</i>
Te ngākau, te tinana, te	<i>journey</i>
wairua i te ara takatū	<i>Oh Rongo, raise these words up high</i>
Koia rā e Rongo	<i>so that we be cleansed and be free,</i>
whakairihia ake ki runga	<i>Yes indeed, we are free!</i>
Kia wātea, kia wātea!	<i>Good and peaceful</i>
Ae rā, kua wātea!	
Hau, pai mārire.	

Kate Glanville
SENIOR DEMOCRACY ADVISOR

HUTT CITY COUNCIL**KOMITI RATONGA O TE AWA KAIRANGI**
HUTT VALLEY SERVICES COMMITTEE

Minutes of a meeting held in the Council Chambers, Level 2,
Upper Hutt City Council, 383-342 Fergusson Drive, Upper Hutt on
Friday 24 November 2023 commencing at 9.30am

PRESENT: Cr B Griffiths, UHCC (Chair)
Cr B Dyer, HCC Cr C Carson, UHCC
Cr C Parkin, HCC Cr H Newell, UHCC (from 9.44am)
Cr N Shaw, HCC (from 9.40am) Deputy Mayor H Swales, UHCC

APOLOGIES: Mayor W Guppy (UHCC) and Cr T Stallinger (HCC)

IN ATTENDANCE: G Swainson, Incoming Chief Executive, UHCC
A Blackshaw, Director Neighbourhoods and Communities, HCC
B Hodgins, Strategic Advisor, HCC
G Roberts, Manager Waste Minimisation, HCC
D Johnson, Project Officer, UHCC (part meeting)
J Arthur, Horticulture and Cemeteries Asset Manager, HCC
M Wilson, Manager Assets and Programmes, UHCC
K Glanville, Senior Democracy Advisor, HCC
L Kynaston, Senior Governance Advisor UHCC
H Clegg, Minute Taker, HCC

PUBLIC BUSINESS**1. OPENING FORMALITIES - KARAKIA TIMATANGA**

Whakataka te hau ki te uru	<i>Cease the winds from the west</i>
Whakataka te hau ki te tonga	<i>Cease the winds from the south</i>
Kia mākinakina ki uta	<i>Let the breeze blow over the land</i>
Kia mātaratara ki tai	<i>Let the breeze blow over the ocean</i>
E hī ake ana te atakura	<i>Let the red-tipped dawn come with a sharpened air.</i>
He tio, he huka, he hau hū	<i>A touch of frost, a promise of a glorious day.</i>
Tīhei mauri ora.	

2. APOLOGIES

RESOLVED: (Cr Griffiths/Cr Dyer) **Minute No. HVSC 23501**

"That the apologies received from Mayor Guppy and Cr Stallinger be accepted and leave of absence be granted."

3. **PUBLIC COMMENT**

Comments are recorded under the item to which they relate.

Cr Shaw joined the meeting at 9.40am

4. **CONFLICT OF INTEREST DECLARATIONS**

There were no conflict of interest declarations.

Cr Newell joined the meeting at 9.44am.

5. **MINUTES**

RESOLVED: (Cr Griffiths/Cr Dyer)

Minute No. HVSC 23502

"That the minutes of the meeting of the Hutt Valley Services Committee held on Friday, 22 September 2023, be confirmed as a true and correct record, subject to an spelling correction on page 3 of the minutes of Totara Park Bridge."

6. RECOMMENDATION TO HUTT CITY COUNCIL AND UPPER HUTT CITY COUNCIL

Akatārawa Cemetery Development

Report No. HVSC2023/5/162 by the Parks and Reserves Manager, Upper Hutt City Council

Speaking under public comment, **Daniel Chrisp** spoke to a written statement (attached as pages 11-13 to the minutes).

In response to questions from a member, Daniel Chrisp acknowledged the \$11M figure was for the completion of the three stages of development. He believed the calculations for the figures needed to be more consistent, including plot sizes. He acknowledged the consultation undertaken by HCC in the early 2000s. He stated that it was not progressed due to a council decision that the issue needed to meet the threshold of requiring public consultation. He was concerned about the travel distance for residents of Lower Hutt to get to the Akatārawa Cemetery. He said there was a cultural need to offer all burial options to the community. He advised that the Wainuiomata Cemetery was a Garden of Remembrance, accepting plots for urns only, and had a limited lifespan.

The Incoming Chief Executive UHCC elaborated on the report.

In response to questions from members, the Incoming Chief Executive UHCC confirmed a review of the Agreement for the Provision of Cemetery Services and Development of Cemetery Land at Akatārawa 2008 (the Agreement) had not taken place. He said the proportion of cost sharing for the Akatārawa Cemetery had changed over time.

In response to questions from members, the Strategic Advisor HCC advised the original formula was based on population numbers. He explained the cost split was now closer to 50/50, and it was time to review the Agreement to ensure it was operating well for both parties. He said the Taitā Cemetery was closed to first interments in 2016. The Horticulture and Cemeteries Asset Manager HCC advised there were no new plots available for purchase at Taitā Cemetery. However, second interments and first interments in pre-purchased plots could occur.

In response to a question from a member regarding timeframes, the Incoming Chief Executive UHCC advised each council was operating under their current Long Term Plan (LTP) budgets. He said the review of the Agreement could be completed in the first half of 2024, with the cemetery's development occurring in years two or three of the 2024-34 LTP.

In response to questions from members, the Manager Assets and Programmes UHCC advised that the \$4.2M figure for stages 1 and 2 of the development (with a contingency of \$500,000) were in today's costs. He advised that a company had already been contracted to provide detailed design for all three stages of the development and that the construction of stage 3 could be deferred to a later time. He agreed to report back on the

P-rating for the project.

In response to further questions from members, the Strategic Advisor HCC advised Hutt City Council had undertaken extensive investigations to purchase land for a cemetery. He said the investigation looked at land options but did not include land in private ownership. He noted there was some public consultation at the time, and the travel outside the city limits was raised as a concern. He reiterated that the first two stages would provide 25 years of space for plots. He further noted that closer to the end of the 25 year period, the two councils could re-evaluate the future cemetery requirements.

The Manager Assets and Programmes UHCC confirmed the design for all three stages of the development had been let in one contract. He said if the design of Stage 3 were removed from the contract, additional costs would be incurred.

The meeting adjourned at 10.12am and resumed at 10.22am.

The Manager Assets and Programmes UHCC spoke to the Akatārawa Cemetery Development presentation attached as Appendix 2 to the report.

In response to questions from members, the Manager Assets and Programmes UHCC acknowledged the possible undetermined Significant Natural Areas (SNA) and that the vegetation in Stage 3 was currently of low value. He said if Stage 3 was not developed for 25 years, that vegetation could become high value. He noted that Stage 2B contained vegetation of medium to high value. However, the amount proposed to be cleared had been significantly reduced from the original proposal. He explained Stage 3 had projected higher costs due to the requirement for a bridge to span a stream to protect the flora and fauna. He noted the bridge was proposed to be two lanes but could easily be reduced in width to one lane, thereby reducing costs. He agreed to provide background information and calculations for the projected lifespan of the proposed development.

In response to questions from members, the Horticulture and Cemeteries Asset Manager HCC advised that if soil conditions allow it, triple decking of a plot or double decking with room for ashes could occur. He said these practices would extend the lifespan of a cemetery.

The Incoming Chief Executive UHCC advised that financial incentivisation for doubling plots was not practised. He agreed to include the options for this in a future report to the Committee.

The Manager Assets and Programmes UHCC agreed to provide background information regarding the cemetery's capacity in a future report to the Committee.

In response to questions from members, the Manager Assets and Programmes UHCC advised the land was already designated for cemetery purposes and consultation with residents had occurred. He said the only feedback received had been a request for a treeline to be planted on the boundary. He confirmed that Stages 1 and 2 of the development would be constructed together.

In response to a question from a member regarding the difference in fees charged by each council, the Incoming Chief Executive UHCC advised Upper Hutt City Council sought to recover 80% of burial costs.

The Horticulture and Cemeteries Asset Manager HCC advised Hutt City Council sought to recover 100% of costs as the burial process was contracted out.

The Director Neighbourhoods and Communities HCC advised that officers would provide a report outlining operations, alignment of services, incentivising, environmental impacts and a full review of the Agreement.

The recommendations were taken in parts. Parts (1) – (6) were declared CARRIED on the voices.

RECOMMENDED: (Cr Griffiths/Cr Carson)

Minute No. HVSC 23503

"That the Committee recommends that Hutt City Council and Upper Hutt City Council:

- (1) receives the Akatārawa Cemetery Development report;*
- (2) notes that a review of the Agreement for the Provision of Cemetery Services and Development of Cemetery Land at Akatārawa 2008 will be undertaken as per clauses 5.1 & 5.2 of the Agreement;*
- (3) continues design of Stages 1, 2 and 3 and development of Stages 1 and 2, at a rough order cost of \$4.2M, and note that this will provide approximately 40 years for ashes and 25 years for interments;*
- (4) notes the rough order cost for stage 3 is \$7.1M and agrees that design of Stage 3 continues;*
- (5) notes that officers will report back to the committee regarding a review of the Agreement for the Provision of Cemetery Services and Development of Cemetery Land at Akatārawa 2008, including that both Upper Hutt and Hutt City are to decide if the capital costs of the cemetery development are to be recovered through user charges; and*
- (6) notes the specific funding required using the Agreement for the Provision of Cemetery Services and Development of Cemetery Land at Akatārawa 2008 formula for the Akatārawa Cemetery development option for consideration of their respective 2024-2034 Long Term Plans."*

7. PROPOSED MEETING DATES FOR 2024

Report No. HVSC2023/5/43 by the Senior Democracy Advisor, Hutt City Council

The Senior Democracy Advisor elaborated on the report.

RESOLVED: (Deputy Mayor Swales/Cr Dyer)

Minute No. HVSC 23504

"That the Committee:

- (1) *agrees to adopt the following schedule of meetings for 2024:*
 - (a) *Friday, 8 March 2024 at 9.30am (Hutt City Council);*
 - (b) *Friday, 3 May 2024 at 9.30am (Upper Hutt City Council);*
 - (c) *Friday, 20 September 2024 at 9.30am (Hutt City Council); and*
 - (d) *Friday, 22 November 2024 at 9.30am (Upper Hutt);*
- (2) *agrees to adopt the following schedule of draft agenda meetings for 2024:*
 - (a) *Wednesday 28 February 2024 at 10.00am;*
 - (b) *Wednesday 24 April 2024 at 10.00am;*
 - (c) *Wednesday 11 September 2024 at 10.00am; and*
 - (d) *Wednesday 13 November 2024 at 10.00am*
- (3) *agrees that the draft agenda meetings for 2024 will be held via Microsoft Teams; and*
- (4) *delegates authority to the Chief Executives of the two Councils, in consultation with the Chair, to alter the date, time or venue of a meeting, or cancel a meeting should circumstances require this."*

For the reason that adoption of a meeting schedule and agreement over the venue for meetings allows orderly planning for all involved.

8. **WASTEWATER JOINT VENTURE UPDATE 1 JULY 2023 TO 31 OCTOBER 2023**

Report No. HVSC2023/5/361 by the Strategic Advisor, Hutt City Council

Steve Hutchison, Chief Advisor Wasterwater, Jeremy McKibbin, Group Manager Network Management, Blair Johnson, Head of Waste Contract, and Linda Fairbrother, Project Lead, Major Projects from Wellington Water Ltd (WWL) were in attendance for the item.

The Group Manager Network Management elaborated on the report.

In response to further questions from members, the Group Manager Network Management acknowledged the recent odour non-compliance. He explained they were due to several factors, including having only 75% of filters replaced and having three unrelated mechanical failures co-occur. He confirmed that once the filters had been replaced, the system would operate better than before the replacement. He said the aging technology of the plant would mean an odour would remain. He advised that for no odour to be detected, significant investment in new technology would be required and that options for this had been presented to each council for inclusion in their respective Long Term Plans.

In response to questions from members regarding the best process for receiving complaints, the Head of Waste Contract advised all complaints should have been directed to Hutt City Council. He said complaints were channelled to the WWL Customer Hub, and the contractor, Veolia, was informed. He added that Veolia investigated all complaints received. He noted that the Greater Wellington Regional Council was sent details of all complaints received by the WWL Customer Hub. He acknowledged the feedback loop to the original complainant could have been operating better, and ways to improve this were being investigated.

In response to further questions from members, the Chief Advisor Wastewater advised that the Seaview Back Up Power Project's scope included an assessment of all potential power arrangements. He agreed to provide a report regarding the project to the Committee.

In response to further questions from members, the Strategic Advisor HCC advised a briefing would be organised for the Committee that outlined the proposed capital projects prioritisation programme for the Seaview Treatment Plant. He said each council would then make decisions.

In response to questions regarding the Barber Grove project, the Project Lead, Major Projects, advised WWL was still receiving expense claims from the contractor, with a total of between \$2M and \$2.5M cost overrun expected. She acknowledged the project had extended beyond the normal expected timeframe. She said that Covid, changes in market prices and delays had combined to make a complex project even more difficult. She anticipated the final cost for the project would be known before the end of 2023.

RESOLVED: (Cr Griffiths/Cr Parkin)

Minute No. HVSC 23505

"That the Committee notes the information in this report."

9. **UPDATE ON SILVERSTREAM LANDFILL AND RESOURCE RECOVERY**

Report No. HVSC2023/5/156 by the Manager Waste Minimisation, Hutt City Council

The Manager Waste Minimisation HCC elaborated on the report.

In response to questions from members, the Waste Minimisation Manager HCC advised the resource recovery area was located after the weighbridge and should begin operations before Christmas 2023. He noted the focus of the landfill was on receipt of materials originating from the Hutt Valley. He explained that all commercial and industrial operators were currently required to declare where their waste came from, but this was optional for private vehicles entering the landfill. He confirmed waste from outside the Wellington region was brought to the landfill, which affected the facility's lifespan predictions.

In response to further questions from members, the Waste Minimisation Manager HCC advised the landfill would not be a drop off point for the Tyrewise Stewardship programme. He said people would need to drop tyres into a dealer for them to recycle. He said a tyre collection facility was currently being planned for the landfill. However, it would not be part of the Tyrewise scheme. He explained the Silverstream Landfill was the only landfill south of Northland to accept Perfluoroalkyl and Perfluoroalkyl Substances (PFAS) waste. He agreed to report back on details regarding where the direction to take such waste originated.

In response to a question from a member regarding the Rehoming of Lizards programme, the Waste Minimisation Manager HCC agreed to report back to the Committee with details once the project had been completed.

In response to a question from a member regarding an emergency disposal plan, the Waste Minimisation Manager HCC advised that a Wellington Region Emergency Disposal Plan (the Plan) had been developed to direct the disposal of waste generated by a major emergency event. He agreed to provide a link for members to access the Plan.

The Waste Minimisation Manager HCC agreed to reinstate the airspace graph in future reports to the Committee.

RESOLVED: (Cr Griffiths/Cr Carson)

Minute No. HVSC 23506

"That the Committee receives and notes the report."

10. **AKATĀRAWA CEMETERY UPDATE**

Report No. HVSC2023/5/158 by the Parks and Reserves Manager, Upper Hutt City Council

RESOLVED: (Deputy Mayor Swales/Cr Griffiths)

Minute No. HVSC 23507

"That the report be noted and received."

11. **HUTT VALLEY SERVICES COMMITTEE FORWARD PROGRAMME 2024**

Report No. HVSC2023/5/157 by the Senior Democracy Advisor, Upper Hutt City Council

RESOLVED: (Cr Griffiths/Cr Dyer)

Minute No. HVSC 23508

"That the Committee receives and notes the Forward Programme for 2024 attached as Appendix 1 to the report."

12. **CLOSING FORMALITIES - KARAKIA WHAKAMUTUNGA**

Unuhia!	<i>Release us from the supreme sacredness of our tasks</i>
Unuhia!	<i>To be clear and free</i>
Unuhia i te uru-tapu-nui	<i>in heart, body and soul in our continuing journey</i>
Kia wātea, kia māmā	<i>Oh Rongo, raise these words up high</i>
Te ngākau, te tinana, te wairua i te ara	<i>so that we be cleansed and be free,</i>
takatū	<i>Yes indeed, we are free!</i>
Koia rā e Rongo whakairihia ake ki	<i>Good and peaceful</i>
runga	
Kia wātea, kia wātea!	
Ae rā, kua wātea!	
Hau, pai mārire.	

There being no further business the Chair declared the meeting closed at 12.03pm.

Cr J B Griffiths
CHAIR

Akatarawa development – Daniel Chrisp public comment

HCC - \$3M in LTP for 29/30 – Land purchase

I am speaking today because I want to help, not to point fingers and not to make anyones job harder. Many of you will know that I am passionate about cemeteries, they provide a peaceful place for families to come and reflect on their loved ones buried there but also about life. They provide open green space for recreation, and once they run out of room for new plots, they connect us to our heritage and our history through the many stories on the headstones. So why should you listen to me? I have over 7 years' experience in cemeteries, and a senior consultant who has 12 years' experience in cemeteries recently did work for our own cemetery expansion project and came to the exact conclusions that I did for that piece of work. I take pride in my wealth of knowledge and expertise.

The English prime minister (1868-1894)

Sir William Ewart Gladstone

“Show me the manner in which a nation cares for its dead, and I will measure with mathematical exactness the tender mercies of its people, their respect for the laws of the land and their loyalty to high ideals”

How are HCC treating their dead?

I am also speaking today because I am gravely concerned. I have spent days poring over historical documents regarding the Taita Cemetery Closure and the Akatarawa cemetery land purchase and I have spent hours going through this agenda and dissecting the information. I have noticed a trend. Previous councils making the easiest and cheapest decision. Now for my own quote, which I hope you will take note of for all your decision making.

“Doing what is easy is not always right, doing what is right is not always easy”

It appears both councils have put all their eggs in one basket, from what I have seen and read, both councils believe Akatarawa Cemetery Expansion is the only option and there is no plan B. It is a risky place to be in for a council when there is no plan B.

Today's discussion and Agenda is about approving 11 million to gain only 3.1 hectares of land for cemetery purposes on the land parcel in Akatarawa. According to the report 7 million of that will be used to utilize a mere 1.3 hectares of land use. For Context PCC and WCC are requiring a minimum of 10ha of burial space (after infrastructure and loss of space due to slopes and / or gullies) to gain a proposed 50 year use for new cemetery space

Documents in 1991 said there was 10ha of useable land and in 2017 the estimate was \$3.5m to develop

I would urge committee members to reconsider approving today's recommendation for several reasons

1. As highlighted in my material - the numbers don't add up

2. Even if the numbers add up due to me not being privy to certain information, spending over \$11m to develop a cemetery that will only last 25 years is not wise. PCC are projected to spend less than that, and it would be for 10+ hectares of useable land.
3. There appears to be no plan B, which is bad practice from councils, all due diligence should be made for all options possible. HCC never investigated land parcels in Wainuiomata that may suitable

I would be more than happy to spend a day with officers either from personal time, or on my work time at PCC (with my managers approval) to go through this report and the calculations.

HCC

'But I've never had residents tell me this is an issue'

1. HCC never consulted with residents about the decision to stop pursuing cemetery land in Lower Hutt, so how would you know?
2. As a member of Wainuiomata community board I have had residents tell me this is an issue, furthermore some lower hutt funeral homes say that nearly every family they speak to is upset there are no local burial options
3. The only time people think about cemeteries is generally when they get very old and want to pre plan things, or when someone passes. If they find this out when someone passes they are grieving and that always takes priority. Complaining to the council comes as a secondary thought and often gets forgotten

'What do you want us to do then?'

1. Firstly HCC need to put it right and consult with residents about the future of their cemeteries space
2. If the outcome is that residents want a more local cemetery space, hire a consultant under urgency to do 'spatial mapping' of Lower Hutt looking for suitable land – in 2003/4 HCC officers never considered private land, they again took the easy route and only considered council or govt owned land – HCC more than happy to acquire 50plus homes for Riverlink!

Presentation notes feedback

Background first bullet point

- 1991 report from HCC recommended doing spatial planning and geotechnical investigations back then, now we have 4-6 years left of space and are rushing this work through! Why was it never done?

Financial slide

Bullet point 2

I think its prudent to note that UHCC are getting very good deal given that HCC own the land and they are avoiding any major land purchase costs

Bullet point 3

-what is the yearly breakdown of these statistics? i calculate this as 130 first interments a year? how many 2nd interments? without knowing the 1st and 2nd interments split you cannot accurately calculate capacity and these %'s

Bullet point 6 and 9 re CAPEX costs

Are UHCC and HCC currently complying (and historically complied) with section 18 of the Burial and Cremation act? requires all money made by cemetery fess to be set aside and used for cemeteries. if not thats our fault. We should not be proposing to increase fees by 40% due to councils oversight and poor business management

Concept plan slide

are the m2 indications here taken from total? or minus driveways and facilities? eg toilets?

Blue, green and pink capacity graph slide

None of these numbers are consistent for plot size calculations - industry standards are 4.5m² - 5m² who ran these numbers? Also industry best practice estimates that you lose 30% of your cemetery land to facilities and infrastructure (eg roads, parking and toilets) i can't see if this has been factored into these calculations?

Recommended alternate viable design last slide

Bullet point 2

this is incorrect, all standard graves are double depth, why are we calculating based on single depth graves? I note CLC who did the above layout plans have no cemetery experience listed on their website...

It should be noted that the land itself for expansion is not ideal land at all given its wetlands, streams and its high ecological value – most councils aim to buy farm like land to develop.

Direction Required slide

Option 2

as previously noted, I don't believe these calculations to be accurate based on 1st interment numbers, 2nd interment numbers and plot size calculations. Even if 25.5 years is accurate, all councils aim for 30 year lifespan minimum, PCC and WCC are currently planning developments to allow for 50 year lifespans.

19 February 2024**Report no: HVSC2024/1/57**

Wastewater Joint Venture Update 1 November 2023 to 31 January 2024

Purpose of Report

1. The purpose of this report is to update the Committee on matters relating to the bulk wastewater system shared by the two cities.

Recommendation

That the Committee receives and notes the information in the report.

Background

2. The report provides information to the Committee on matters relating to wastewater assets that make up the joint venture.

Seaview Wastewater Treatment Plant

3. The Seaview Wastewater Treatment Plant (SWWTP) is operated under the *Regional Wastewater Treatment Plant Services Contract* with Veolia. This is a 10-year contract.
4. The plant is non-compliant for effluent quality due to high levels of faecal coliforms while effluent Biochemical Oxygen Demand (BOD) and suspended solids remained compliant for this reporting period. The main cause of the ongoing faecal coliform non-compliance is electromechanical failures in the UV system resulting in sub-optimal disinfection performance. The team is currently progressing with the component renewals to improve the UV system's performance.
5. UV lamp replacements were undertaken progressively throughout the year with majority of the replacements completed in December 2023. The contractor has already indicated that other parts requiring replacement and on order will take up to 8 weeks to arrive. Until these component renewals are complete, it would be difficult to estimate the plant's estimated timeframe to return into compliance.

6. Chemical disinfection as an interim solution is not feasible due to cost implications, the required chemical handling systems and the likelihood of an additional consent. Veolia will be preparing a compliance plan for the site expected to be given to WWL in February 2024.
7. Greater Wellington Regional Council (GWRC) has issued infringement notices to the councils, Wellington Water Limited (WWL) and Veolia on 15 November 2023 in relation to non-compliant effluent quality.
8. The key issue for the quarter was the poor odour compliance. There were 143 odour complaints received for the treatment plant for this reporting period. GWRC assessed the plant odour to be offensive and objectionable and therefore not meeting consent conditions on 13 occasions between 31 October and 12 December 2023. The main cause of the odour was the biofilter media and replacement activity, with several other equipment maintenance issues contributing.
9. GWRC issued 26 infringement notices to WWL and Veolia (13 for odour discharges and 13 for breaches of an abatement notice). HCC and UHCC each received 13 infringement notices for breaches of an abatement notice, during this period. WWL provided a response letter to GWRC relating to these infringement notices on 31 January 2024, in particular disputing the interpretation and application of infringement notices relating to abatement notices and are in ongoing discussions with GWRC regarding this.
10. A public meeting was held on 6 December 2023 jointly between HCC and WWL to explain and discuss the odour issue. The biofilter media replacement work was substantially completed before Christmas, with some settling in and reinstatement work, including the fixed watering system, completed in January. A follow-up odour survey and investigation has concluded that while odour treatment has improved, the biofilter is still not operating to full effectiveness.
11. The "plenum" air distribution system underneath the biofilter cells requires replacement. This was identified during condition inspection work in mid-November, however the decision was made to proceed with the biofilter media replacement work without repairing the plenum structure, as undertaking the plenum repair would delay the immediate improvement in odour control achieved by replacing the media. The biofilter plenum repair is being planned to commence within this financial year.
12. Due to the ongoing odour around the site the project work to renew and improve the plant odour control system will be brought forward. Further public meetings will be scheduled on a quarterly basis and level of proactive notification of maintenance will be increased to keep the community informed.
13. The plant had one consented discharge to the Waiwhetu Stream on 18 December due to high flows during wet weather, discharging fully treated effluent.

14. The plant had one discharge of undisinfected but biologically treated effluent to the Pencarrow outfall on 31 January due to a power outage. The plant's UV system is not connected to a backup power supply. A project reviewing the plant's backup power supply is underway and will include connecting the UV system to a backup power supply as a core objective.
15. GWRC issued a formal warning letter on 8 November 2023 in relation to dry weather discharges to the Waiwhetu Stream on five occasions between July 2022 and 14 March 2023.
16. GWRC have issued the annual Seaview WWTP Consent Compliance report for FY 2022/23. The plant had received a significant non-compliance rating for effluent discharge, wet weather discharge and air discharge consents due to effluent non-compliance, unconsented dry weather discharges and discharges to air (odour) that were assessed by regional council officers as offensive and objectionable.
17. A regular meeting with the HCC Trade Waste team has been set up to aid in investigating industrial discharges to the WWTP. Trade waste discharges are still being monitored.
18. Specialist assessment on critical assets which were highlighted in the last visual condition assessment such as the odour ducting system is currently underway. The results will be fed into the capital renewal planning work.
19. The ageing assets in Seaview WWTP are presenting an ongoing challenge for the plant's overall performance and compliance with the resource consents. The known asset risks are currently being addressed through capital renewal which will take some time and reactive maintenance will be used as required. Reliable and consistent consent compliance will be more achievable when these asset renewals are complete.
20. Process monitoring using remote monitoring software has been implemented to keep a closer look at the plant's treatment performance.
21. Negotiations between WWL and Veolia are still in progress with regard to the terms of the Regional WWTP Service Delivery Contract which are likely to have financial implications to both CAPEX and OPEX budgets. The current proposed draft 2024 - 2034 LTP figures accounts for the forecasted variation and using the latest information at hand.

Consent Renewal Update

22. HCC holds two discharge consents that permit the temporary discharge of treated wastewater from the Seaview WWTP into the Waiwhetu Stream (during rainfall events and when the MOP is being repaired). Both consents have been operating under section 124 of the RMA since 2018 when a replacement consent application was lodged with GWRC in 2017. GWRC has advised that it expects progress on a new application to be given priority with reliance on section 124 no longer an option.

23. The 2017 application proposed to continue the intermittent discharge for a further 5 years while the construction of a storage tank to hold wastewater was completed. The application was put on hold by GWRC under questions of capacity of the storage tanks capacity to manage population growth.
24. WWL has since concluded that this infrastructure solution proposed in 2017 is not suitable with changes in network flow forecasts and higher standards in the Natural Resource Plan and is working with mana whenua to revisit previous options and explore new ones.
25. A project team has been established to progress the intermittent discharge consent project and take a fresh look at options.
26. The project team has met with mana whenua and recently established a Rōpū, comprised of representatives from Taranaki Whānui, Hikoikoi Management and Te Rūnanga o Toa Rangatira to collaborate on options to reduce or discontinue the intermittent discharge of treated wastewater to the Waiwhetū Stream. The renewal of the Main Outfall Pipeline, or suitable alternative, is directly related to these options.

Treatment Plant Projects Update

27. The biofilter media replacement was substantially completed in December 2023 which improved odour treatment, however, further work needs to be undertaken to reinstate the full treatment performance of the site's existing odour treatment system. The project team is currently finalising their project management plan for the upgrade project for the site odour control. The project team has been instructed to provide a proposal on what activities can be fast tracked within this financial year.
28. Seaview WWTP back-up power supply project is currently in progress. The project is currently at the very early stage of project planning. The project aims to connect the UV system to a backup power supply and improve the site's overall response against power outages.
29. A mechanical renewal project which involves the renewal of the treatment plant aeration system, return activated sludge (RAS) system and waste activated sludge (WAS) system is currently in progress. Veolia will undertake maintenance activities to these systems to address performance issues on these assets until the project is complete. The project is currently at the very early stage of project planning.
30. The Seaview WWTP Dryer project is undertaking preliminary investigations prior to the concept design phase. A 'market testing' activity will be undertaken for a Design and Construct delivery model that will feed into the Procurement Strategy.
31. The Seaview WWTP UV renewal project tender documents were released to market in December 2023. The contract is expected to be awarded around late March to early April 2024. As noted above the current UV system will undergo component renewals to improve its performance while the replacement project is still underway.

Major Projects Update

32. A Capital Project Update can be found at Appendix 1, which includes the update for the Barber Grove Project, Petone Collecting Sewer Renewal, and other major Seaview WWTP and network projects.
33. A separate Barber Grove Project closeout report is included as Appendix 2.

Community Engagement and Consultation

34. As noted above a public meeting to discuss Seaview WWTP odour concerns was conducted on 6 December 2023.
35. A community liaison group (CLG) meeting to discuss the plant's performance is set to occur in March of this financial year. This will cover the GWRC consent compliance report for 2022-23, with an update on current performance and the Odour Management Project. Quarterly CLG meetings are being planned to update the community with progress on the Odour Management Project.
36. The regular monthly meetings with GWRC consent officers have been maintained. These ensure that GWRC is kept updated on issues with the Seaview WWTP performance.
37. Monthly performance dashboards including updates relating to odour management are posted on the WWL/Seaview Wastewater treatment plant website and updated monthly.
38. Public communications regarding plant discharges to the Waiwhetū Stream have been undertaken as per standard protocol.
39. Monthly performance dashboards, including updates relating to odour management are posted on the WWL/SWWTP website and updated monthly.
40. Public communications regarding plant discharges to the Waiwhetū Stream have been undertaken as per standard protocol.

Climate Change Impact and Considerations

41. WWL has recently completed a carbon emissions baseline study on its capital programme as part of its commitment to carbon reduction. There has been a good understanding of carbon emissions attributable to its operations since 2019.
42. The replacement of the sludge dryer, (currently gas operated) will have a significant impact on operational carbon emissions.

Legal Considerations

43. WWL has requested a hearing in relation to duplicate infringement notices for breaches of an abatement notice (odour). No hearing date has been set and WWL and GWRC are in discussions in relation to this hearing request and the infringements.

Financial Considerations

44. The latest financial report is attached as Appendix 3 to the report.

Appendices

No.	Title	Page
1↓	Major Projects Summary Update	23
2↓	Barber Grove to Seaview WWTP Project Close Out Report	24
3↓	Financial report - Quarterly Report - January 2024	31

Author: Bruce Hodgins
Strategic Advisor

Approved By: Alison Geddes
Director Environment and Sustainability



HCC & UHCC Joint Venture Committee Project report January 2024

Project	Purpose and summary:
Petone Collecting Sewer – Stage 1	<p>Purpose:</p> <ul style="list-style-type: none"> Renew the existing rising main to convey current and future wastewater flows, increase the seismic resilience and design a pipeline with a life expectancy of 100 years <p>Summary:</p> <ul style="list-style-type: none"> Design work continues to progress, this project phase is expected to take 12-15 months before moving to procurement with construction expected to commence in 2025 Investigations on the condition of the Stage 2 section of this pipeline will commence in February 2024. The highest risk this project faces is the failure of the existing pipeline before this project is completed.
Seaview Odour Control upgrade	<p>Purpose:</p> <ul style="list-style-type: none"> To renew and upgrade the odour treatment equipment at the Seaview WWTP to achieve odour compliance over the expected 20-year life of the new equipment and provide a safe working environment for operators. <p>Summary:</p> <ul style="list-style-type: none"> Veolia completed the Biofilter media replacement ahead of schedule with work completed in December 2023 The project management plan was delayed and will now be issued to Wellington Water in February 2024
Seaview WWTP Sludge Dryer Replacement:	<p>Purpose:</p> <ul style="list-style-type: none"> The objective of this activity is to renew and/or upgrade the existing ageing Seaview WWTP thermal sludge dryer to support the growth in the Seaview WWTP catchment and aligns with HCC and WWL carbon emission reduction goals. <p>Summary:</p> <ul style="list-style-type: none"> Consultant selection has been completed up until Concept phase. Number of investigations are currently underway before the Concept phase can commence. A 'market testing' activity will be undertaken for a Design and Construct delivery model that will feed into the Procurement Strategy. In parallel, there is an another workstream, Regional Biosolid Strategy where initial stage has almost completed. The outcome from this strategy would feed into the Seaview WWTP Sludge Dyer replacement project.
Seaview WWTP UV Renewal	<p>Purpose:</p> <ul style="list-style-type: none"> The objective of this activity is to renew and upgrade the existing Seaview WWTP UV disinfection system to ensure that ongoing compliance is met. <p>Summary:</p> <ul style="list-style-type: none"> Tender document was released in December 23. It is anticipated that the contract will be awarded in late March or early April 24.
Totara Park Road – Bridge Pipework Seismic Strengthening (WW portion)	<p>Purpose:</p> <ul style="list-style-type: none"> To reduce the risk of water supply disruption from a seismic event to the Totara Park community. <p>Summary:</p> <ul style="list-style-type: none"> In addition to the original scope to renew the water supply pipe across the bridge, there was efficiencies found in renewing 255m of the wastewater pipe across the bridge at the same time. The project is currently working through procurement.
Western Hutt Trunk Sewer Renewal JV*	<p>Purpose:</p> <ul style="list-style-type: none"> Maintain reliable wastewater services to Lower Hutt and Upper Hutt to avoid the discharge of wastewater to the surrounding environment by ensuring that the critical wastewater pipeline does not fail or collapse <p>Summary:</p> <ul style="list-style-type: none"> A key objective of this project is to urgently scope a well informed and cost-effective renewal programme for the identified pipelines and associated assets of the Western Hutt Trunk Sewer running parallel to the Hutt River and Stateway Highway 2. The other objective is to prevent unexpected interruption of service from the potential pipeline collapse due to its poor structural condition. Approximately 1,300 metres of the trunk sewer has been rated as poor condition grade. The project is currently in the early stages of implementation.

*Very high criticality asset

Barber Grove to Seaview WWTP Pipe Duplication Project

Project Close Out Report

Barber Grove to Seaview WWTP Pipe Duplication Project

Project Close Out Report

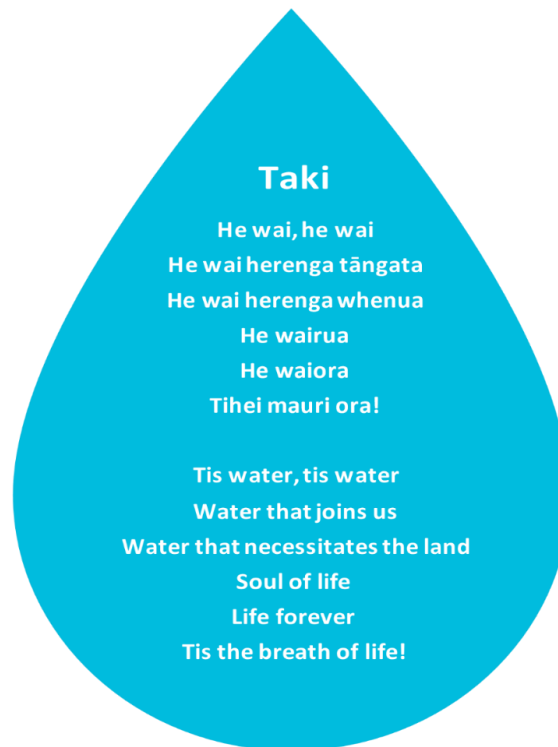
January 2024



Prepared by: Linda Fairbrother, Project Lead, Wellington Water

Barber Grove to Seaview WWTP Pipe Duplication Project

Project Close Out Report



Te Horopaki

Background

The Main Collecting Sewer (MSC), constructed in the 1960s, is a 1.2km long rubber ring jointed concrete pressure pipe that conveys wastewater from Barber Grove Pump Station to Seaview Wastewater Treatment Plant (WWTP). All untreated water from the Hutt Valley (except Wainuiomata and Eastbourne) is delivered to the treatment plant through the MCS.

The underlying soils in the Seaview and Moera area are prone to liquefaction in a seismic event. This can cause pipes like the MCS to float resulting in the joints failing and pulling away from one another. The existing main collecting sewer is therefore considered highly vulnerable to failure during an earthquake and would be extremely difficult to repair. A failure of this main would result in raw sewage flowing overland into the stormwater system, discharging into the Waiwhetu Stream and/or into Te Awa Kairangi. This would also cause disruption and damage to the local community including commercial properties.

This project was originally programmed for delivery in 2015, but due to funding constraints was deferred and re-programmed for delivery from 2020.

Barber Grove to Seaview WWTP Pipe Duplication Project

Project Close Out Report

Whakarāpopototanga

Summary

The project successfully installed a new 1.2km long, one-metre diameter pressurised wastewater pipeline using trenchless technology (55%) and open trench construction. The new pipeline now services 90% of Hutt Valley residents, and provides increased resilience for the environment in the event of a large earthquakes.

The project construction took longer than expected which resulted in increased costs, in turn exceeding the project budget. At the time of this report the final claims are still under review so the final cost cannot be confirmed.

The innovation used to deliver this project resulted in a reduced impact for the community and in particular road users and businesses along the route of the pipeline. Complex connections on live pressure pipes were completed with no wastewater entering the environment. The innovation undertaken on this project saw it win a Civil Contractors New Zealand award and be a finalist in the Australasian Society for Trenchless Technology awards held in Brisbane 2023.

Ngā hoaketanga

Project Objectives

1. Review and update the 2014 detailed design to ensure it meets current standards, specifications and best practice
2. Deliver a new resilient pipeline with a 100 year design life.

Whakataunga

The Solution

Following review of the 2014 design, a procurement approach was identified to seek a contractor to deliver both the construction and input into the final design.

The successful tenderer, McConnell Dowell engaged in the design review and brought innovation and new technology to the project in the form of micro tunnelling. The Early Contractor Involvement (ECI) period allowed the project delivery team time to foster a customised and collaborative approach.

Micro tunnelling allowed the pipeline to be installed in a more resilient layer of the ground, less susceptible to liquefaction, further enhancing the resilience of the new asset. The other significant benefit of the micro tunnelling approach was the reduced disruption to the local community and in particular allowed us to maintain two way traffic on Randwick Road for the duration of the project. This would not have been possible with a traditional open trench solution.

The final design allowed for 55% of the pipeline to be installed using micro tunnelling technology, the remaining portion was largely installed by traditional open trench construction.

Barber Grove to Seaview WWTP Pipe Duplication Project

Project Close Out Report

Hauora o te Taiao

Health, safety, environment & quality

General Health & Safety Status

McConnell Dowell demonstrated a commitment to keeping their staff and sub contractors safe on this project. Throughout delivery Wellington Water observed high reporting rates for risk identification, positive observations and incidents.

A total of seven health and safety incidents occurred during construction. None of these were lost time injuries and were generally minor cuts and abrasions.

There was one serious incident where an overhead communications cable was struck. No one was injured. Following the investigation, the root cause was found to be that the risks and hazards were not correctly re-assessed following a change in the original planned activity. McConnell Dowell demonstrated their commitment to collaboration and transparency throughout this investigation process.

General Environmental Status

Throughout this project no wastewater was spilled.

A number of complex connections to live pressure pipelines were completed during construction. The new pipeline was installed while protecting the integrity of the existing Main Collecting Sewer. There was no interruption of service to the community as a result of these works.

There was one environmental incident where untreated ground water entered the stormwater system – and ultimately Te Awa Kairangi. This was due to human error when an additional pump used to remove ground water from an excavation was not installed correctly.

As part of making this right, mana whenua was invited to a project toolbox session to emphasise the importance of protecting our waterways – this was well received both by mana whenua and the contractors. Additional controls were put in place and no further incidents occurred.

General Quality

Throughout the project strict quality management plans were followed, which included destructive testing of a number of pipe welds – all of these tests during the project passed.

Comprehensive quality information packs for the new pipeline have been submitted and reviewed as part of our Quality Assurance plan.

Barber Grove to Seaview WWTP Pipe Duplication Project

Project Close Out Report

Raupapa Kaiwhaipānga

Stakeholder Management

During this project there were a total of 56 stakeholder complaints. Most of these were regarding noise in the Elizabeth / Randwick Road area and following the partial closure of Seaview Road. The contractors were found to be very responsive and made adjustments to their set up accordingly.

Of note more than 20 compliments / positive feedback were also recorded during the construction period.

With an average of 30,000 vehicles travelling through the Seaview round-a-bout every day, 18,000 of which travelling down Randwick Road the Early Contractor Involvement (ECI) focus on reducing the impact to road users produced positive outcomes. The works were disruptive, but through strong planning and stakeholder management the disruptions were minimised wherever possible. It is fair to assume that there would have been far more complaints if this project was delivered with a traditional open trench approach.

There was positive collaboration with mana whenua throughout the works. Mana whenua named the Tunnel Boring Machine (TBM) – Te Rū Tiokaoka and performed karakia blessings at the start of the project and for the launch of Te Rū Tiokaoka on the first tunnelling drive.

Te Hōtaka Wā

Programme timeline

The original construction programme was for 13 months. During this time there were a number of challenges ranging from Covid-19, unexpected ground conditions and material delays. These resulted in approximately six weeks extension of time being granted.

Construction works commenced in February 2022 and Practical Completion was achieved on 22 September 2023 – a total of 19 months, 6 months longer than originally planned.

Whakapaunga utu

Project Expenditure

At the time of contract award the estimate to construct this project was \$27.5m. This estimate included a contingency sum.

Mid way through the construction additional funding was sought to allow for the realisation of risks including cost escalation, unexpected ground conditions and design changes. At this time, a revised budget of \$31.5m was requested.

Final claims are still being assessed at the time of this report. The March 2023 estimate of \$31.5m will be exceeded. Based on information available at the time of this report we expect the final project cost to be approximately \$34m.

Barber Grove to Seaview WWTP Pipe Duplication Project

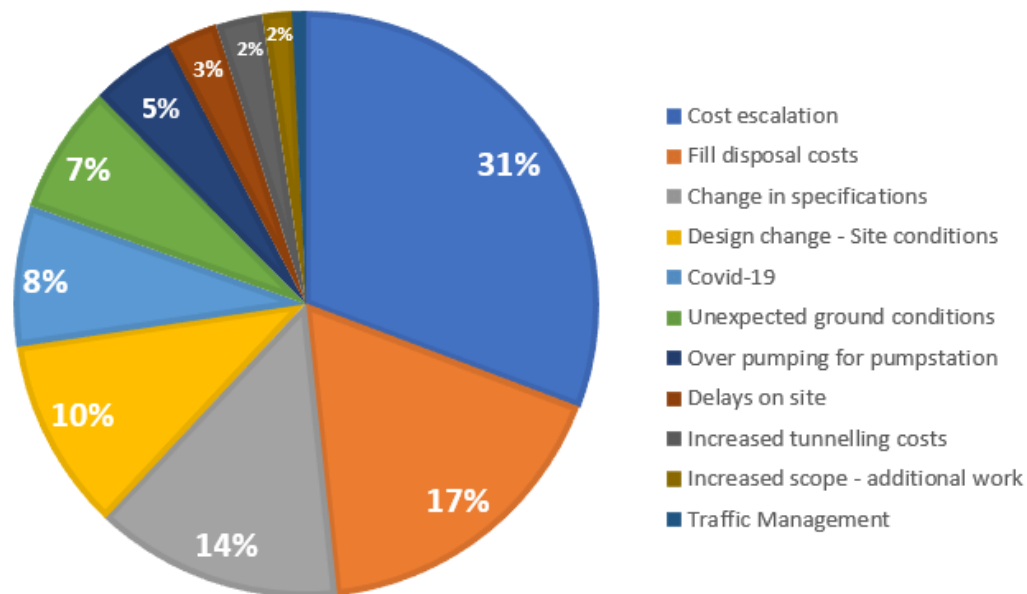
Project Close Out Report

The main drivers for the additional costs are:

- **Realisation of known risks**, some assessed costs exceeded earlier estimates
- **Increased cost escalation**, costs exceeded what was estimated in March
- **Pro-longed programme**, delivery took almost four months longer than expected.

A summary of the additional project costs are included in the image below:

VARIATIONS FOR THE BARBER GROVE TO SEAVIEW WWTP DUPLICATION PROJECT



Whiwhinga

Awards

The innovation in this project saw nominations for awards both internationally and within New Zealand.

- Halversons Civil won an award at the [Wellington Wairarapa Civil Contractors New Zealand \(CCNZ\) awards](#) for their secant shaft pile in the centre of the Seaview round-a-bout.
- McConnell Dowell were a finalist in the Australasian Society for Trenchless Technology (ASTT) awards held in Brisbane for the [New Installation Project of the year award](#).

Now that the project is complete, it is likely the project will be submitted for more awards in the coming year.

Barber Grove to Seaview WWTP Pipe Duplication Project



Project Close Out Report

Huanga
Outcomes

Following the completion of this project the Hutt Valley has a new, resilient pipeline to convey wastewater from the Barber Grove Pump Station to the Seaview Wastewater Treatment Plant.

This pipeline has delivered on the Service Goals identified in the project brief to:

- I. protect the public health risks associated with wastewater and,
- II. provide resilience in the event of a seismic event.

Primary customer outcome		Outcome 1: Safe and healthy water
Primary goal		1.4 We minimise public health risks associated with wastewater and stormwater
Secondary customer outcome		Outcome 3: Resilient networks support our economy
Secondary goal		3.2 We provide three water networks that are resilient to shocks and stresses

The new duplicate pipeline allows for operational redundancy. This means we now have the ability to divert flows from one pipeline to the other to allow for maintenance or inspection activities. Before the new MCS was completed this functionality was not possible and posed a risk of wastewater entering the environment if works were required.

The new pipeline was also successfully constructed and commissioned with no wastewater spilling or entering the environment. This was achieved through thorough planning and undertaking the complex connections on live pipelines using a specialist team.

The new pipeline has been constructed with resilient Polyethylene (PE) pipe. The tunnelling solution also allowed for it to be placed in a layer of ground that is less susceptible to liquefaction. This means that in a seismic event the new pipeline is expected to perform well and reduce the risk of failure that would result in wastewater entering the environment.

In addition to the water outcomes for the project it is also important to note that lighting for the Lightwing Sculpture has been installed on Seaview round-a-bout. Lighting was planned as part of the sculpture’s original installation but was deferred due to this project. The project team have worked with the E Tū Trust to install lighting to their design. These new lights have not been switched on yet, the timing for this is being worked through in conjunction with HCC and the E Tū Trust.

HUTT VALLEY TRUNK WASTEWATER SERVICESSTATEMENT OF OPERATING INCOME AND EXPENDITURE
FOR THE PERIOD ENDED 31 JANUARY 2024

	Actual Year to Date \$000's	Budget Year to Date \$000's	Annual Budget \$000's	Forecast \$000's
Rent	179	175	301	301
Profit on sale of Fixed Assets	-	-	-	-
Royalties	2	3	5	5
Trade waste rebates *	806	518	889	931
Interest income	-	-	-	-
Total Revenue	987	697	1,195	1,237
Operational contracts	1,132	624	1,069	1,857
Operational contracts - Wellington Water Limited	5,797	5,726	9,816	9,391
Trade waste inspection charges	161	161	277	277
Utility rates	958	1,098	1,181	1,046
Wastewater / DBO administration	-	-	-	-
Engineering services	-	-	-	-
Rising Main Vulnerability Assessment	1	21	35	35
Insurance	278	318	560	560
Interest	-	-	-	-
Depreciation	2,672	3,113	5,450	4,383
Total operating expenditure	10,999	11,062	18,388	17,549
Net operating deficit	(10,013)	(10,365)	(17,193)	(16,312)
Funded by way of:				
Operating Contributions from HCC (including depn)	68% 6,790	7,041	11,446	10,599
Operating Contributions from UHCC (including depn)	32% 3,223	3,324	5,747	5,713
	10,013	10,365	17,193	16,312

* Trade waste rebates are not shared on a 70%/30% split - which impacts on the funding % rates

HUTT VALLEY TRUNK WASTEWATER SERVICESSTATEMENT OF CAPITAL EXPENDITURE
FOR THE PERIOD ENDED 31 JANUARY 2024

Capital - Work in Progress				
Trunk DBO Type A Network Development Growth	14,854	15,754	27,272	25,808
Total Work In Progress	14,854	15,754	27,272	25,808
Funded by way of:				
Capital Contributions from HCC	88% 13,144	10,555	18,272	17,291
Capital Contributions from UHCC	12% 1,711	5,199	9,000	8,517
	14,854	15,754	27,272	25,808

HUTT VALLEY TRUNK WASTEWATER SERVICESFIXED ASSET REGISTER SUMMARY
FOR THE PERIOD ENDED 31 JANUARY 2024

	Asset Cost \$000's	Accumulated Depreciation \$000's	Net Book Value \$000's
Infrastructural Bulk Wastewater	142,643	9,328	133,315
Infrastructural Land	15,180	-	15,180
Operational Buildings	1,291	328	963
Operational Site Improvements	160	67	93
Operational Land	21	-	21
Operational Plant	-	-	-
Restricted Land	1,007	-	1,007
Resource Consents	95	80	15
	160,397	9,803	150,594
Share of assets held by:			
HCC	68% 111,306	8,491	102,815
UHCC	32% 49,091	1,312	47,779
	160,397	9,803	150,594

19 February 2024

Report no: HVSC2024/1/20

Update on Silverstream Landfill and resource recovery

1. The purpose of the report is to update the Committee on the development, operation and performance of Silverstream Landfill, and initiatives associated with the co-located transfer station.

Recommendation

That the Committee receives and notes the report.

Background

2. Officers provide regular reports to this Committee regarding the development, operation and performance of Silverstream Landfill (the landfill) and the co-located transfer station.
3. The operation of the landfill is required to meet obligations under the Resource Management Act, the Hutt Valley Trade Waste Bylaw, the Climate Change Response Act and related legislation, the Waste Minimisation Act and relevant Hutt City Council (HCC) and Upper Hutt City Council (UHCC) waste minimisation and climate change objectives.
4. Note that HCC officers report on a wider range of solid waste and waste minimisation initiatives via HCC's Climate Change and Sustainability Committee. For the latest report please see [here](#).

Silverstream Landfill

Development

5. The Silverstream Landfill accepts a range of mixed waste for disposal. While three landfills in the Wellington region accept municipal waste, Silverstream is the only lined Class A landfill, which means it must meet various strict regulatory, siting, design and operational requirements.
6. The Landfill requires ongoing capital investment to create 'air space' that can be used for the disposal of residual waste. Capital investment is staged to develop disposal capacity as required, with timing periodically re-evaluated in light of forward projections for the quantity of material accepted for disposal.

7. Current development work is focused on the design and enabling works for Phase 3 of the landfill, whereby airspace will be created in the lower part of the existing gully below Phase 2. Filling of Phase 3 will begin from the new toe bund at the base of the gully and move up to meet Phase 2. The first Phase 3 slope is scheduled to be available for filling from late 2026.
8. Salvage and relocation of lizards is largely complete in the Phase 3 development area and the first stage of the asbestos cell development area. Some post clearance surveys are still required following the completion of tree felling in Phase 3.
9. Additional lizard salvaging is required to enable the borrow are (for extracting soil) on the western side of the landfill – salvage and relocation works for lizards in this area will be undertaken during February and March 2024. It is expected further lizards will be salvaged and relocated from this area.
10. To date, a total of 230 lizards (geckos and skinks) have been relocated to Horoeka Scenic Reserve, mostly comprised of rare Copper skinks, and the more common Northern grass skinks and Raukawa gecko. A further update will be available once the programme is complete.
11. The organic material, mulch and topsoil recovered from the Phase 3 site is being stockpiled for use in remediating and revegetating parts of the landfill site (eg borrow areas that are no longer in use).
12. The initial stages of enabling works for the dedicated asbestos disposal cell have been completed, including vegetation clearance.
13. With the large amount of landfill development work underway, Council is regularly assessing the priorities for construction in order to balance the availability of specialised contractors and weather dependent works. The need to keep up with demand for general airspace and within capital budgets may require the construction of further slopes in the current general waste disposal area (Phase 2) ahead of further development of the dedicated asbestos cell.

Operations

14. To manage the risk of not maintaining the required contingency for landfill airspace, officers continue to carefully review special waste applications to constrain inflows. Officers are aiming to reserve capacity for projects within the Hutt Valley, especially those involving HCC or UHCC or critical infrastructure and development activities.
15. Proactive management of airspace is currently having the desired effect of limiting waste volumes to the level where airspace construction can keep pace with incoming material.

Perfluoroalkyl and Perfluoroalkyl Substances (PFAS) disposal at Silverstream Landfill

16. PFAS have been used since the 1950s, 20 years before the first stage of Silverstream Landfill opened in the early 1970s.
17. PFAS have very useful properties, they are chemically inert, can withstand high temperatures, and have good surfactant properties. They are used in a large variety of applications (Teflon, waterproofing on outdoor clothing, anti-stain coatings on fabrics, waterproofing on cardboard, etc). PFAS-containing waste will have been coming into the landfill since the 1970s and although the worst PFAS have been banned from use, they will still be in the waste stream for decades to come.
18. PFAS are highly mobile in the environment and break down very slowly (they have been nicknamed “forever chemicals”).
19. PFAS started to emerge as an issue in NZ in the early 2010s and the first contamination was publicly notified in 2017 (groundwater contamination at RNZAF airbases at Ohakea and Woodbourne).
20. In 2018, NZ guidance on dealing with PFAS waste was published. Silverstream Landfill is constructed and operated in congruence with this guidance.
21. PFAS contaminated soil was first accepted into Silverstream landfill in 2020. GWRC considered that receipt of this material was in accordance with the consent, but required reassurance that this would not present a significant risk to the Hutt aquifers. Work was undertaken to assess this risk and the required assurance was provided.
22. There has been no specific direction for Silverstream Landfill to receive PFAS contaminated soils. Applications for PFAS contaminated materials are treated similarly to other special waste applications. However, Silverstream Landfill is one of only a limited number of landfills to accept this waste stream.

Health and safety

23. There were no significant Health and Safety incidents between October and December 2023.

Environmental performance

24. A summary of environmental performance for October to December 2023 is shown in Appendix 1 attached to the report.
25. The Airspace Utilisation Graph has been reinserted into the Environmental Performance Report and included as a separate page for ease of reading.

26. The summary references management trigger levels being exceeded, which require investigation or mitigation measures to be undertaken as part of an adaptive management approach. No compliance trigger levels were exceeded. Overall, the landfill has been compliant with its resource consent conditions.

Resource recovery changes at Silverstream transfer station

27. The project to construct a new resource recovery shelter for Earthlink is now complete, see image below. Council is working with Waste Management and Earthlink staff to maximise diversion opportunities arising from the new layout and structure. For more detail on this see [here](#).



28. Resource Recovery Park proposal for Manor Park

29. HCC has received a resource consent application from WMNZ to establish a Resource Recovery Park (RRP) in Manor Park, near the SH1/SH58 Interchange. There has been no further progress on this since the last update in November 2023. Officers understand the applicant is still in the process of responding to questions raised by Waka Kotahi regarding traffic flows and related design elements.
30. Information regarding this consent application is available at <https://www.huttcity.govt.nz/property-and-building/resource-consents/types-of-work-that-need-a-resource-consent/30-benmore-crescent>.

Climate Change Impacts and Considerations

31. Regarding the new landfill operations contract, note that it includes specific requirements for the operator to reduce operational emissions. Emissions have been estimated at 652tCO₂e for 2021/22. The operator has already committed to reducing these emissions by at least 25% by 2030, but HCC is also working with the operator toward reducing these by 50% by 2030, in line with HCC's carbon target.
32. To achieve a reduction in emissions of 50% or more by 2030, HCC continues work on establishing a heavy vehicle EV charging plant. Initial designs are largely complete, and our funding application to EECA's non-road transport decarbonisation fund has been approved. Some capital funding originally allocated to the development of a new transfer station has been reallocated to this project. Enabling works to increase the available power to the site will be commencing in the coming months.
33. Regarding emissions from the landfill itself (methane), a powerplant and supplementary flare operated by LMS are in place to destroy emissions as much as possible and a new additional methane engine has arrived on site and is currently being commissioned.

Consultation

34. Not applicable.

Legal Considerations

35. There are no legal considerations at this time.

Financial Considerations

36. There are no financial considerations at this time.

Appendices

No.	Title	Page
1 ↓	Silverstream HCC Dashboard_Q4 2023	37

Author: Geoff Roberts
Manager Waste Minimisation

Reviewed By: Jörn Scherzer
Head of Climate and Solid Waste

Approved By: Alison Geddes
Director Environment and Sustainability

Silverstream Environmental Quarterly Report for the Hutt Valley Services Committee (October to December 2023)

Waste

Total waste of previous quarter: 45162 tonnes

Total waste of this quarter: 45551 tonnes

Month	Sludge	Special	Total commercial*	Total residential	Total Waste
July	425	2,183	7,187	2,807	12,601
August	327	4,626	8,720	2,791	16,463
September	288	4,075	8,640	3,095	16,099
October	306	6,219	8,116	3,620	18,261
November	406	2,134	7,787	3,702	14,029
December	346	1,444	7,631	3,840	13,261

*General waste is included in the commercial waste total

Monitoring effort during the quarter

- Gas surveys - 10
 - Groundwater monitoring rounds - 3
 - Surface water monitoring rounds - 3
 - Surface water visual assessments - 3
 - Leachate measurements - 1 (Flow monitored 24/7)
- → Complies with consent conditions
 - → At least 1 management trigger value exceedance
 - → At least 1 consent exceedance

Leachate

Leachate quality results:

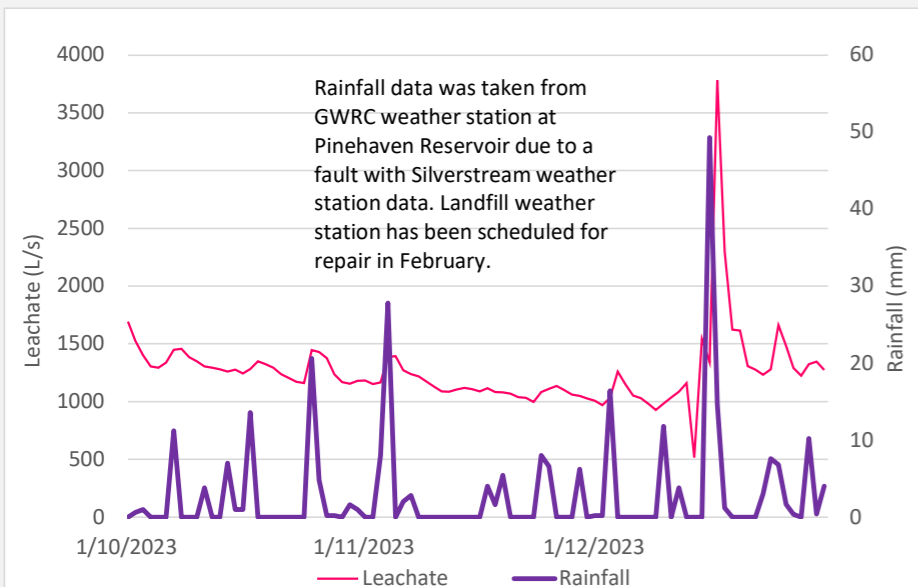
There were no exceedances of leachate trade waste conditions.

Leachate flow volume to Seaview Wastewater treatment plant (m3):

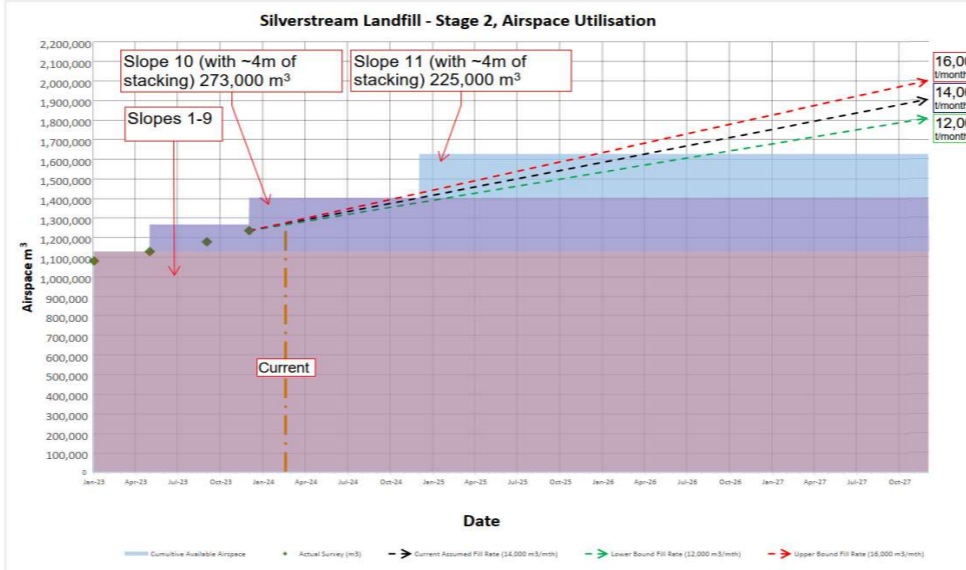
October	November	December
12,279	10,231	12,509

Daily leachate flow and rainfall

Total rainfall: 271.596 mm



Air space utilisation



See page 2 for full size graph.

Water



Groundwater analysis

There were 3 trigger value exceedances for total alkalinity (October, November and December at BH4S). The elevated results are unlikely to be caused by leachate contamination or affect water quality.



Surface water analysis

There were no trigger level exceedance at SW4 during the quarter.

Tip stream (downstream of the landfill, SW4) visual assessment

SW4 Observation	October	November	December
Water Clarity	Slightly cloudy	Clear	Clear
Foam	No	Some	No
Odour	No	No	No
Algae	No	No	No
Flow	Moderate	Moderate	Moderate

Hulls creek (the creek downstream from Tip stream) was not monitored in October in error. Monitoring of Hulls creek was not required in November or December as Tip stream was clear.

Gas

Surface gas results

There were surface methane trigger exceedances at multiple gas well locations in the quarter (normal level of exceedances)

Gas probe results

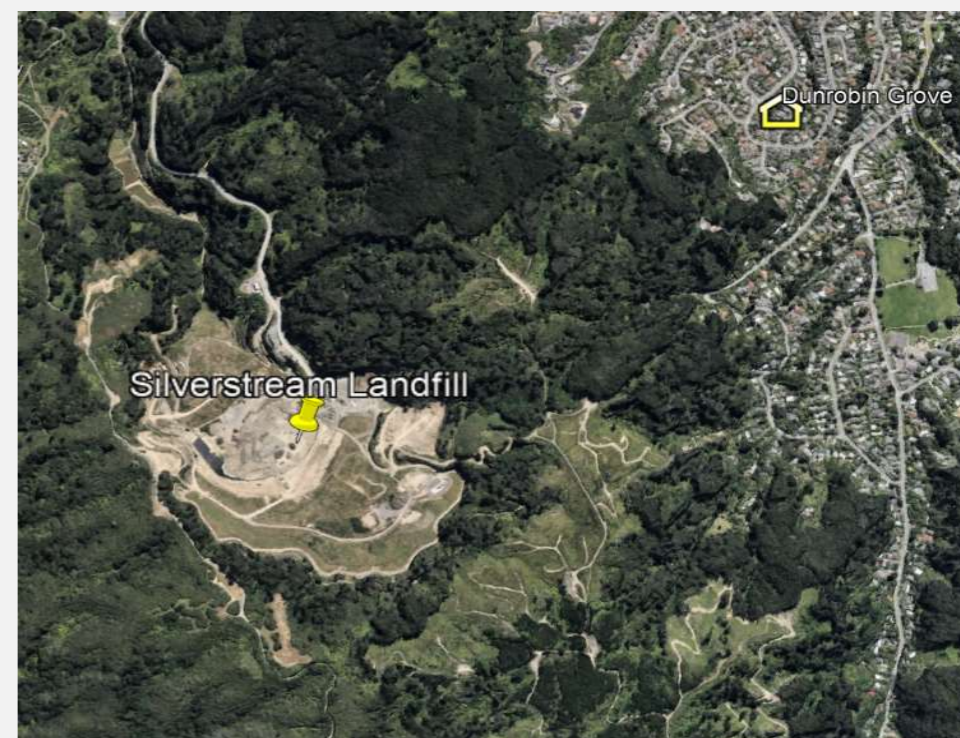
No methane exceedances (greater than 5% CH4 by volume) for either of the two probes located outside the landfill footprint.

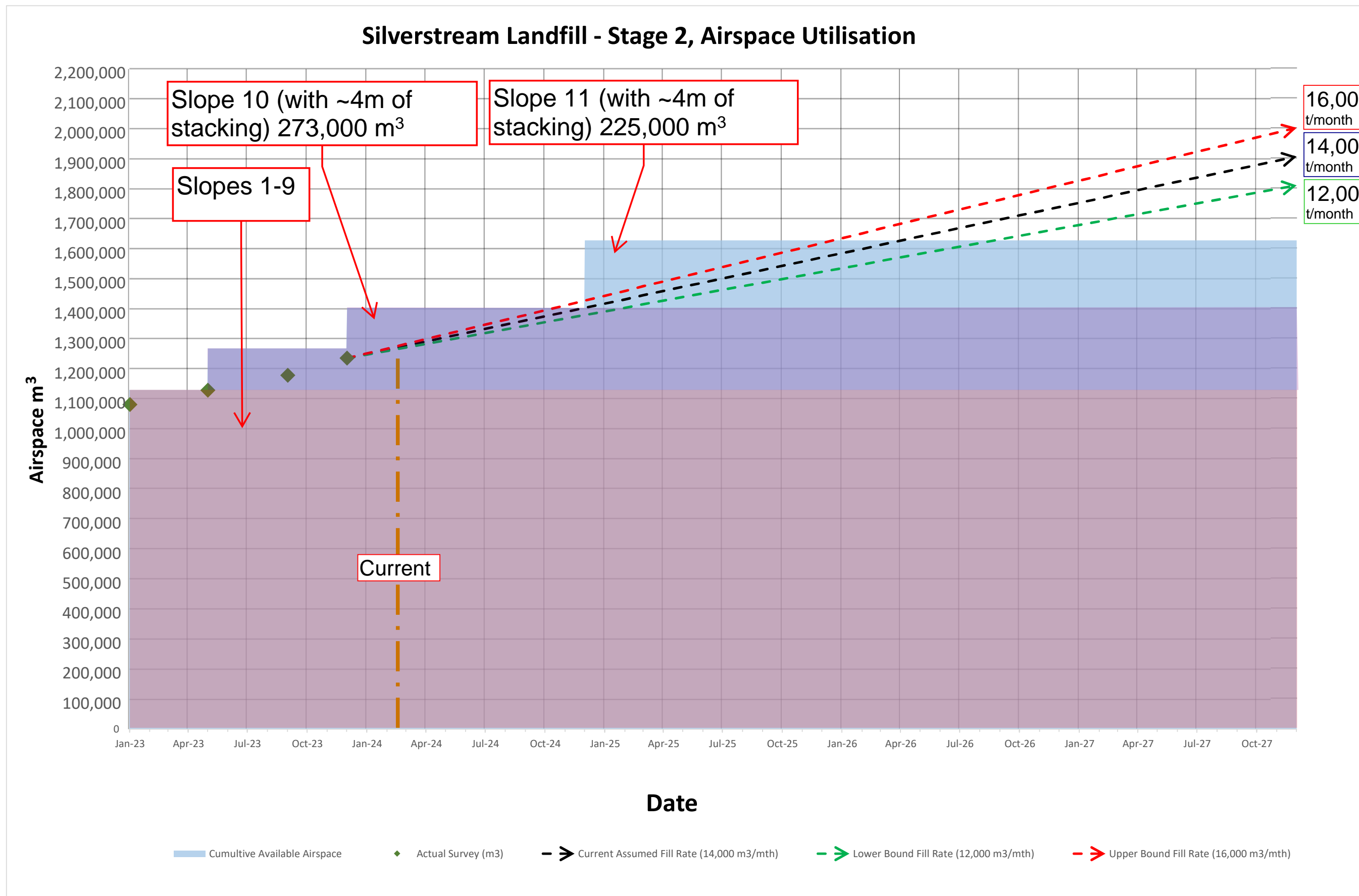
Gas collected

Parameter	Unit	October - December
Gas flow rate	m3/hr	1319
Methane concentration	%	47.73

Odour

Months	October	November	December
Complaints	0	0	1
Total in Quarter	1		







Memo

To:	HUTT VALLEY SERVICES COMMITTEE	From:	BRETT LATIMER
	8 th March 2024		Parks and Reserves Manager

Subject:	AKATĀRAWA CEMETERY UPDATE	File:	304/01-001
----------	---------------------------	-------	------------

Date:	20 th February 2023	Reference:	
-------	--------------------------------	------------	--

Purpose

1. To update the Committee on a proposed timeline and content for the review of the Cemetery agreement.
2. To provide an update on progress of the developed design of the Cemetery extension and
3. To provide a summary of current operational expenditure.

Recommendations

4. The Committee,
 - i. receives the Akatārawa Cemetery Update report,

Background

5. A number of actions have been requested by the Committee which include the following.
 - Provide an Update on the Agreement Review
 - Report back on the P _ Rating of the Akatarawa Cemetery Development (ACD) project
 - Provide background information and calculations for the projected lifespan of the ACD project.
 - Provide option for financial incentivisation for doubling of plots in a future report.
 - Provide background information regarding the cemetery capacity in a future report.
 - Provide a future report outlining operations, alignment of services, incentivising, environmental impacts and full review of the agreement.

Discussion

Provide an Update on the Agreement Review

6. Agreement Review - A preliminary meeting has been held on 22 February with Arthur Nelson, Head of Parks and Reserves HCC and Brett Latimer, Parks and Reserves Manager UHCC to discuss and develop clear terms of reference and a structure for the review. A review team/steering group is proposed to be set up to allow enable other key staff and resources to be called upon on an as required basis. A timeline for the completion of the review will also be developed and progress reports will be provided to the Committee on a regular basis.

Report back on the P _ Rating of the Akatarawa Cemetery Development (ACD) project

7. The P- rating system is not used by Upper Hutt City Council on this project. The rough order costings undertaken by our Quantity Surveyor included a 20% contingency on this project. It should be noted that we are only at the rough order costing stage and that the rough order costing is based on the 2023 Concept design, which was approved by the two Councils in December 2023. As we progress to the Developed Design stage of the Project, we will undertake Developed Design Costing and have a clearer understanding of cost.

Provide background information and calculations for the projected lifespan of the ACD project.

8. The 2017 Concept Development Plan estimated burial demand at 1.5ha per decade; a total of approximately 50 years capacity for all 5 stages.
9. The current Project is detailed design of 3 stages and only construction of stages 1 and 2 now. The conservative estimate of development capacity undertaken in October 2023 was based on the 2023 Concept Design indicative area and used a formula of each burial plot taking up 4m² for the lawn plaque areas, and 3.6m² for the monumental areas. The ashes sections were worked out at 1m² per plot (single monument beams), recent interment rates/types also factored into calculations, as did known factors about environmental site constraints including ground water levels and proximity to waterways etc. (It did not take into consideration 2nd or 3rd interments).
10. Diversification of services offered i.e. introduction of above ground ashes walls could further increase projected lifespan.
11. Significant natural disaster causing mass death, pandemic, or other significant change, event etc. experienced in our community that contributed to significant increase in deathrate could decrease projected lifespan. Also, introduction of services that take up more area than outlined above could decrease projected lifespan.

Provide option for financial incentivisation for doubling of plots in a future report.

12. A certain level of financial incentivisation already exists for people to choose double depth plots because if I use the current fees and charges and I wanted to buy a plot for a deceased family member today I would pay:
13. \$1021.70 for the Adult plot (plaque and monumental) + \$937 for interment + \$750 for maintenance in perpetuity (adult) + \$136.20 for double depth = TOTAL \$2,844.90

14. Then when that person's partner dies all I would have to pay is the cost to inter them which would =
TOTAL \$937
15. So, in essence total cost to bury two people in a double depth plot in the same financial year would be
\$3,781.90 as opposed to burying two people each in single depth plots in the same financial year which
would cost \$5,689.80.

Provide background information regarding the cemetery capacity in a future report.

16. Capacity projections will be better understood at the Developed design stage and Council will be updated as required.

Provide a future report outlining operations, alignment of services, incentivising, environmental impacts and full review of the agreement.

17. Once the agreement has been fully reviewed and the detailed design completed, a report will be prepared covering the future operation model, alignment of services and also the fee structure.

Cemetery Development

18. Further enabling works activities and investigations will be carried out to provide more accurate information to progress the alternate design construction documentation. Once the developed & detailed design has been completed a detailed cost estimate will be undertaken.
19. We are currently preparing a revised project programme to complete the remainder of the design and required consents.
20. The amended design variation costs are being negotiated with the consultant team.
21. The project dashboard will be provided in the next city services report.

General

22. As of 31 December 2023, the total operating Cemetery expenditure was \$271,476 compared to a year-to-date budget of \$283,794. The total Operating revenue is \$235,741 compared to a year-to-date budget of \$225,918.



TO: Chair and Members
Hutt Valley Services Committee

FROM: Kate Glanville

DATE: 16 February 2024

SUBJECT: HUTT VALLEY SERVICES COMMITTEE FORWARD
PROGRAMME 2024

Recommendation

That the Committee receives and notes the Forward Programme for 2024 attached as Appendix 1 to the memorandum.

Purpose of Memorandum

1. To provide the Hutt Valley Services Committee (the Committee) with a Forward Programme of work planned for the Committee for 2024.

Background

2. The Terms of Reference for the Committee requires the Committee to facilitate the coordination and decision making of combined council services within the Hutt Valley.
3. The Forward Programme for 2024 provides a planning tool for both members and officers to co-ordinate programmes of work for the year. The programme is attached as Appendix 1 to the report.

Executive Summary

4. The Forward Programme is a working document and is subject to change on a regular basis.

Appendices

No.	Title	Page
1	Hutt Valley Services Committee Forward Programme 2024	43

Author: Kate Glanville
Senior Democracy Advisor

Approved By: Kathryn Stannard
Head of Democratic Services

Hutt Valley Services Committee – Forward Programme – 2024

Description	Author	May 2024	September 2024	November 2024
Wastewater Joint Venture Update	Strategic Advisor, Hutt City Council	x	x	x
Update on Silverstream Landfill and Resource Recovery	Head of Climate and Solid Waste, Hutt City Council	x	x	x
Akatārawa Cemetery Update	Parks and Reserves Manager, Upper Hutt City Council	x	x	x
Forward Programme	Hutt City Council Upper Hutt City Council (November 2024)	x	x	x
Election of Chair and Deputy Chair	Upper Hutt City Council			x
Proposed Meeting Dates for 2025	Upper Hutt City Council			x