



**KOMITI RATONGA RANGATŌPŪ ME TE RAUTAKI**  
**POLICY, FINANCE AND STRATEGY COMMITTEE**

Meeting to be held in the Council Chambers, 2nd Floor, 30 Laings Road, Lower Hutt

on

Monday 14 October 2024 commencing at 2.00pm

**SUPPLEMENTARY ORDER PAPER**

**PUBLIC BUSINESS**

7. **HUTT CITY COUNCIL GROUP ANNUAL REPORT 2023-24**

Memorandum dated 8 October 2024 by the Financial Accounting Manager 2

Jack Kilty  
DEMOCRACY ADVISOR

**TO:** Chair and Members  
Policy, Finance and Strategy Committee

**FROM:** Darrin Newth

**DATE:** 8 October 2024

**SUBJECT:** DRAFT 2023-24 GROUP ANNUAL REPORT



### **Purpose of Memorandum**

1. The purpose of this memorandum is for the Policy, Finance and Strategy Committee (the Committee) to receive the designed draft 2023-24 Group Annual Report (the Annual Report), attached at Appendix 1, and provide final feedback to officers.

### **Background**

2. Officers are currently preparing Council's Annual Report for 2023-24. A designed draft version of the Annual Report is attached at Appendix 1 to the memorandum.

### ***Revaluation of Assets***

3. The annual report has been updated to reflect an asset revaluation increase of \$1.421B for Council (\$1.423B including Council Controlled Organisations).
4. Most of this movement is related to the Three Water Network assets. These assets were independently reviewed by WSP Limited (WSP) as at 31 May 2024. A considerable amount of work has been undertaken to validate the underlying movement in unit rates by Audit NZ, Wellington Water Limited, GHD and Council officers.
5. Officers note that there are a number of factors that WSP have taken into consideration in the asset valuation for 30 June 2024. Their work has focused on the activity and costs incurred in recent times. In the broader strategic context for the Wellington region:
  - a) there has been sharp lift in the demand for water services and the need to fix and repair the ageing network;
  - b) there is limited competition in the region and limited ability to source from outside of the region;
  - c) our metro environment, with density and steep terrain in places, has a high number of water connections to deal with which adds complexity and cost; and
  - d) there are other factors driving up costs including but not limited to health and safety, traffic management, and working at night to minimise disruption.

*Auditor's Report*

6. The external audit by Audit NZ is not complete as yet. The Council has not yet received the final Auditor's Report for inclusion in the 2023-24 Annual Report. This is expected to be tabled at the Committee's meeting on 29 October 2024. Note that for design purposes, place holder pages for the Auditor's Report are included in Appendix 1.

**Next Steps**

7. The final version of the Annual Report will be reported back to the Committee for final endorsement on 29 October 2024.

**Appendices**

No.	Title	Page
1↓	Hutt City Council draft 2023-24 Annual Report	4

**Author:** Darrin Newth  
Financial Accounting Manager

**Author:** Harman Singh  
Advisor Strategic Planning and Business

---

**Reviewed By:** Richard Hardie  
Head of Strategy and Policy

**Reviewed By:** Jenny Livschitz  
Group Chief Financial Officer

**Approved By:** Jarred Griffiths  
Director Strategy and Engagement


2023-24



# Pūrongo ā-Tau Annual Report

**DRAFT**





The lines woven throughout this document are inspired by the topographic lines of two significant areas around Te Awa Kairangi ki Tai Lower Hutt: Pukeatua, the high ridge between Waiwhetū and Wainuiomata and Pukeariki, the highest point in Wellington's Belmont Regional Park (Belmont Trig). The movement of the lines references the form of the land, the coastline's shape, the tides' movement, and the river's flow and symbolises the energy and diversity of the different cultures, communities and people living and working together in Te Awa Kairangi ki Tai Lower Hutt.

# He mihi

Ko Te Awa Kairangi he pou herenga iwi, he pou herenga waka.

Here mai ko te kei o tō waka ki te tumu herenga waka o ngā pae mouna kua whakatūtūria nei e te hikuroa o Ngake Mai i Tararua ki Remutaka ki Pūrehurehu, ki Pōkai Mangumangu, ki Pareraho, ki Tirohanga, ki Tukutuku, ki Puke Tirotiro, ki Pukeariki, e whakamarumarutia nei Te Tatau o Te Pō a Ngāti Te Whiti, a Ngāti Tāwhirikura, ki Pukeatua, te tuahu tapu o Te Kāhui Mouna i te wā i a Māui ki te whakapuare i te wahanui o Te Ika Whakarau a Kutikuti Pekapeka.

I ahu mai i Te Wai Mānga, i a Rua Tupua, i a Rua Tawhito, Ko Ngake, ko Whātaimai. Ka timu ngā tai o Te Wai Mānga, ka parzi mai ko Te Whanganui a Tara e pōkarekare mai ana.

Ka tū a Pukeatua ki runga i ngā wai e kato ana, i a Awamutu, i a Waiwhetū, kei reira a Arohanui ki te Tangata a Ngāti Puketapu, a Te Matehou, a Ngāti Hāmua e tū ana, tae noa atu rā ki ngā wai tuku kiri o te pūaha o te awa o Te Awa Kairangi.

Koia hoki te puna i heke mai ai he tangata. E kore e mimiti tēnei puna, ka koropupū, ka koropupū. Ko Te Awa Kairangi e rere iho mai ana i hōna pūtakenga i Pukemoumou i te paemounga o Tararua ki runga i hēnei whenua, ki runga i tēnei kāinga, hei āhuru mōwai ngā iwi.

Te Awa Kairangi is a rallying point for the many people and the many tribal affiliations that have made it their home.

Bind yourself to the many mountains of this place that were born from the lashing tail of Ngake. From Tararua to Remutaka, to Pūrehurehu, to Pōkai Mangumangu, to Pareraho, to Tirohanga, to Tukutuku, to Puke Tirotiro, to Pukeariki, to Te Korokoro o Te Mana which stands atop Te Tatau o Te Pō of Ngāti Te Whiti and Ngāti Tāwhirikura, to Pukeatua, the sacred altar of the Mountain Clan in the time of Māui.

It was here that the two ancient tūpuna, Ngake and Whātaimai, were summoned from the depths of the fresh water lake, tasked with prising open the mouth of the great fish.

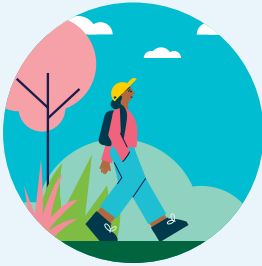
It is Pukeatua that stands above the waters of Awamutu and Waiwhetū, the home of Arohanui ki te Tangata of Ngāti Puketapu, Te Matehou, and Ngāti Hāmua, flowing out to the life-giving waters at the mouth of Te Awa Kairangi.

This is the spring that gives life to the people. This spring which will never be diminished, it will continue to flow, it will continue to flourish. Te Awa Kairangi that flows down from its source at Pukemoumou in the Tararua ranges and over these lands as a sheltering haven for the people.

# Ngā hua o roto

## Contents

<b>He karere nā te Koromatua / Tumu Whakarae</b> Message from the Mayor and Chief Executive	4
<b>Nga Kīwei o Te Kete</b> Partnership with Mana Whenua	5



## Tirohanga whānui

### Overview

<b>Aratohu pānui pūrongo</b> How to read this report	7
<b>Tō tātou tāone</b> Our city	8
<b>Ko wai mātou? He aha hā mātou mahi?</b> Who we are and what we do	12
<b>Hō mātou whakaarotau</b> Our priorities	13
<b>Ngā mahi o te tau</b> Our year in review	14
<b>Key highlights</b>	
<b>Whakangao i ngā poupuo hāpori</b> Investing in infrastructure	16
<b>Hei āhuru mōwai mō te katoa</b> Increasing our housing supply	20
<b>Tiaki taiao</b> Caring for and protecting our environment	22
<b>Taunaki ōhanga auaha, tāone whakapoapoa</b> Supporting an innovative, agile economy and attractive city	24
<b>Tūhono hāpori</b> Connecting communities	26
<b>Whakauka ahumoni</b> Financial sustainability	30
<b>Ki hea tohaina ai hāku rēti?</b> Where will my rates be spent?	36



## Tātaritanga

<b>Our performance</b>	<b>38</b>
<b>Ngā whakatau me ngā whakapae o te kaweraatonga</b> Service performance judgements and assumptions	39
<b>Whakarāpopoto tātaritanga</b> Our performance at a glance	42
<b>Oranga taiao</b> Environmental wellbeing	45
<b>Ngā puna wai</b> Water supply	46
<b>Waiparu</b> Wastewater	51
<b>Waiāwhā</b> Stormwater	56
<b>Para</b> Solid waste	60
<b>Whakauka me te Manawaroa</b> Sustainability and resilience	64
<b>Ngā Ratonga Waeture</b> Regulatory services	68
<b>Oranga ōhanga</b> Economic wellbeing	72
<b>Ngā waka</b> Transport	73
<b>Whanake tāone</b> City development	79









































































































































































































































































































































































































































































































































