



KOMITI KAUPAPA TAIAO CLIMATE CHANGE AND SUSTAINABILITY COMMITTEE

25 June 2025

Order Paper for the meeting to be held in the
Council Chambers, 2nd Floor, 30 Laings Road, Lower Hutt,
on:

Wednesday 2 July 2025 commencing at 2:00 pm

The meeting will be livestreamed on Council's YouTube page.

Membership

	Cr J Briggs (Chair)
	Cr C Parkin (Deputy Chair)
Mayor C Barry	Cr K Brown
Cr S Edwards	Deputy Mayor T Lewis
Cr A Mitchell	Cr N Shaw

For the dates and times of Council Meetings, please visit www.huttcity.govt.nz

Have your say

You can speak under public comment to items on the agenda to the Mayor and Councillors at this meeting. Please let us know by noon the working day before the meeting. You can do this by emailing DemocraticServicesTeam@huttcity.govt.nz or calling the Democratic Services Team on 04 570 6666 |

0800 HUTT CITY



KOMITI KAUPAPA TAIAO | CLIMATE CHANGE AND SUSTAINABILITY COMMITTEE

Chair:	Cr Josh Briggs
Deputy Chair:	Cr Chris Parkin
Membership:	Mayor Campbell Barry Deputy Mayor Tui Lewis Cr Keri Brown Cr Simon Edwards Cr Andy Mitchell Cr Naomi Shaw Refer to Council's Standing Orders (SO 31 Provisions for Mana Whenua)
Quorum:	Half of the membership
Meeting Cycle:	Meets on an eight-weekly basis or at the requisition of the Chair
Reports to:	Council

OVERVIEW:

The Komiti Kaupapa Taiao | Climate Change and Sustainability Committee has responsibility for oversight of Council's environment and climate change response.

The committee is aligned with the Environment and Sustainability Directorate.

Its areas of focus are:

- Oversight of Council's plan to reach Carbon Zero
- Collaborating with Mana Whenua, residents and businesses to decarbonise the city
- Developing and implementing climate and environmental policies and plans including ecology, biodiversity, forestry and biosecurity matters
- Climate adaption and resilience
- Treaty partnerships
- Waste and recycling
- Issues affecting the natural environment including streams, rivers and harbour
- Allocate funding for community climate action

PURPOSE:

To develop, implement, monitor and review strategies, policies, plans and functions associated with environmental and climate change activities to strengthen the long-term resilience and sustainability of the city through climate change awareness and action.

DELEGATIONS FOR THE COMMITTEE'S AREAS OF FOCUS:

- All powers necessary to perform the committee's responsibilities, including the activities outlined below.
- Develop required strategies and policies. **Recommend draft and final versions to Council** for adoption where they have a city-wide or strategic focus.
- Implement, monitor and review strategies and policies.
- Oversee the implementation of major projects provided for in the Long Term Plan or Annual Plan.
- Oversee budgetary decisions provided for in the Long Term Plan or Annual Plan.
- Oversee the development and implementation of plans and functions that promote environmental well-being, including Council's plan to reach Carbon Zero.
- Maintain an overview of work programmes carried out by Council's Environment and Sustainability Directorate.
- Address matters related to ecological protection, the protection of biodiversity and biosecurity.
- Address matters related to climate change, including raising awareness of climate-related impacts and issues, advocating for climate change impacts, issues and actions and championing initiatives that reduce carbon emissions.
- Advocate for strong relationships with Council's Mana Whenua partners as outlined in the Tākai Here agreements ensuring the outcomes of the committee are in line with the aspirations of the partners.
- Advocate for the best interests of Māori communities in Lower Hutt having regard to the committee's goals.
- Ensure the committee is operating in a way that is consistent with various pieces of legislation that provide for Te Tiriti o Waitangi.
- **Recommend to Council** the acquisition or disposal of assets unless the acquisition or disposal is provided for specifically in the Long Term Plan.
- Conduct any consultation/engagement processes required on issues before the committee.
- Approve and oversee monitoring of funding for community climate action.
- Approve and forward submissions (other than those delegated to the District Plan Review Committee).
- Any other matters delegated to the committee by Council in accordance with approved policies and bylaws.
- The committee has the power to perform the responsibilities of another committee where it is necessary to make a decision before the next meeting of that other committee. When exercised, the report/minutes of the meeting require a resolution noting that the committee has performed the responsibilities of another committee and the reason/s.

- If a policy or project relates primarily to the responsibilities of the Komiti Kaupapa Taiao | Climate Change and Sustainability Committee, but aspects require additional decisions by the Komiti Hapori Ahurea me ngā Rangapū | Communities, Culture and Partnerships Committee and/or Komiti Hanganga | Infrastructure and Regulatory Committee, then the Komiti Kaupapa Taiao | Climate Change and Sustainability Committee has the powers to make associated decisions on behalf of those other committees. For the avoidance of doubt, this means that matters do not need to be taken to more than one of those committees for decisions.

HUTT CITY COUNCIL

**KOMITI KAUPAPA TAIAO | CLIMATE CHANGE AND SUSTAINABILITY
COMMITTEE**

Meeting to be held in the Council Chambers, 2nd Floor, 30 Laings Road, Lower Hutt
on
Wednesday 2 July 2025 commencing at 2:00 pm.

ORDER PAPER

PUBLIC BUSINESS

1. OPENING FORMALITIES - KARAKIA TIMATANGA

Whakataka te hau ki te uru
Whakataka te hau ki te
tonga
Kia mākinakina ki uta
Kia mātaratara ki tai
E hī ake ana te atakura
He tio, he huka, he hau hū
Tihei mauri ora.

*Cease the winds from the west
Cease the winds from the south
Let the breeze blow over the land
Let the breeze blow over the ocean
Let the red-tipped dawn come with a sharpened
air.
A touch of frost, a promise of a glorious day.*

2. APOLOGIES

No apologies have been received.

3. PUBLIC COMMENT

Generally up to 30 minutes is set aside for public comment (three minutes per speaker on items appearing on the agenda). Speakers may be asked questions on the matters they raise.

4. CONFLICT OF INTEREST DECLARATIONS

Members are reminded of the need to be vigilant to stand aside from decision making when a conflict arises between their role as a member and any private or other external interest they might have

5. UPDATE ON COUNCIL'S CLIMATE CHANGE WORK

Report No. CCASC2025/3/190 by the Senior Advisor - Climate and Sustainability

7

CHAIR'S RECOMMENDATION:

“That the recommendations contained in the report be endorsed.”

6. **UPDATE ON WASTE AND RESOURCE RECOVERY MATTERS**

Report No. CCASC2025/3/191 by the Senior Advisor Waste - Planning and Strategy

21

CHAIR'S RECOMMENDATION:

"That the recommendation contained in the report be endorsed."

7. **RETROSPECTIVE APPROVAL MEMORANDUM FOR SUBMISSION TO CONSULTATION ON PROPOSED CHANGES TO WASTE LEGISLATION**

Memorandum dated 09 June 2025 by the Senior Advisor Waste - Planning and Strategy

29

CHAIR'S RECOMMENDATION:

"That the recommendation contained in the memorandum be endorsed."

8. **CLIMATE CHANGE AND SUSTAINABILITY COMMITTEE FORWARD PROGRAMME 2025**

Report No. CCASC2025/3/188 by the Democracy Advisor

40

CHAIR'S RECOMMENDATION:

"That the recommendation contained in the report be endorsed."

9. **QUESTIONS**

With reference to section 32 of Standing Orders, before putting a question, a member shall endeavour to obtain the information. Questions shall be concise and in writing and handed to the Chair prior to the commencement of the meeting.

10. **CLOSING FORMALITIES - KARAKIA WHAKAMUTUNGA**

Unuhia!

Release us from the supreme sacredness of our tasks

Unuhia!

To be clear and free

Unuhia i te uru-tapu-nui

in heart, body and soul in our continuing journey

Kia wātea, kia māmā

Te ngākau, te tinana, te

wairua i te ara takatū

Koia rā e Rongo

Oh Rongo, raise these words up high so that we be cleansed and be free,

whakairihia ake ki runga

Yes indeed, we are free!

Kia wātea, kia wātea!

Good and peaceful

Ae rā, kua wātea!

Hau, pai mārire.

Jenny Young,
Democracy Advisor

Report no: CCASC2025/3/190

Update on Council's climate change work

Purpose of report

1. Officers provide a regular update on key climate change work to implement Council's organisational carbon target and [Council's Carbon Reduction and Climate Resilience Plan \(CRP\) 2021-31](#), facilitate a reduction in city-wide emissions in line with the [Lower Hutt Climate Action Pathway](#), and address climate change impacts.
2. To avoid duplication, some work with climate change implications is reported in separate reports and/or other committees. This includes work on waste minimisation and Council's kerbside service.

Recommendations

That the Committee:

- (1) notes the update on climate change work streams currently underway; and
- (2) notes that updates are only provided for those projects or activities where significant progress has been made, or where significant changes have occurred since the [previous update on 29 April 2025](#).

Reducing Council's organisational carbon emissions

Council facilities

3. An energy audit was completed for the Memorial Park building, utilised by Capital Football. The key savings opportunity is to replace the fossil gas-powered water heaters with electric-powered water cylinders. Solar PV was also investigated. While beneficial in the long term, savings opportunities are relatively modest in light of the relatively low energy use of the facility.

4. Works at the old Huia aquatic facility continue, with gas heating to be replaced with heat pumps. The refurbished facility is scheduled to reopen in December 2025. Once open, the facility will no longer utilise any fossil gas. The heating plant change at Huia is expected to reduce Council's remaining fossil gas consumption by over 40%, with associated carbon emission reductions.

Vehicle fleet

5. The EV share has now reached 80% (52 out of 65 vehicles). Note that the fleet includes 12 plug-in hybrid vehicles (18%), which are included within the scope of the EV share.
6. Further fleet changes and replacements are scheduled for the second half of 2025, with a focus on the remaining diesel utes. If swapped out as scheduled, Council's EV share may reach 85%+ by the end of the year.
7. In addition, some plug-in hybrid AWD vehicles are scheduled to be replaced with full battery electric equivalents.

Locky Dock installation in Te Awa Kairangi Ki Tai

8. As part of a joint initiative between Hutt City Council's transport team and Big Street Bikers, five Locky Dock units will be installed across selected locations in the Lower Hutt. These sites are:
 - Te Ngaengae pool (already installed)
 - Petone Esplanade
 - Stokey Valley Community Hub
 - Queensgate Shopping centre
 - The Dowse Art Museum
9. This project aims to provide better infrastructure for environmentally friendly transport options while increasing the visibility and accessibility of active travel throughout the city.
10. The Locky Docks are anticipated to be installed by September 2025 subject to final site preparations and coordination with project partners. This will bring the total number of Locky dock sites in the city up to seven.
11. See the project plan attached as an appendix.

Bike Parking in Te Awa Kairangi Ki Tai

12. Officers are developing a GIS interactive map of bike parking across the city. Once all data has been uploaded and checked for accuracy, it can be made available to the public on the Council's website.

13. The map includes bike parking owned by Hutt City Council, Greater Wellington Regional Council, and also includes privately owned but publicly available bike parking (such as those outside supermarkets). On the map, each parking site can be selected, and the viewer will be presented with the following information:

- A photo of the bike park/s
- The capacity (eg it can take four bikes)
- If there is rain cover
- If you need to bring your own bike lock

14. An example of the type of information that can be shown is below:

The screenshot shows a map of a city area with several colored markers representing bike parking spots. A pop-up window titled "Bike parking: Hoop x 2" is displayed on the right side of the map. The window contains a table with the following information:

Locking	Bring Your Own Lock
Rain cover	No
Ownership	Hutt City Council
Capacity	2
Comments	Hoop x 2
Data Source	City Centre Mapping Tools

Below the table, there is a small photograph showing a concrete bike rack with two metal hoops.

15. A map showing both public and private bike parking in the city could give bike riders greater confidence in end-of-journey bike parking options. It will also give officers a better understanding of bike parking service levels across the city and help to identify any gaps that might need addressing in the future.

16. It is anticipated that the map will be completed by the end of 2025, albeit it will require ongoing updates as privately owned bike parking in particular may change without Councils' knowledge.

Heavy EV charging hub at Silverstream landfill

17. Construction of the proposed hub for charging heavy electric vehicles was completed in early June 2025.

18. Officers are continuing to work with Waste Management NZ on their plans to roll out electrified yellow gear and/or construction equipment. Further detail can be shared once it is available.

Reducing city-wide carbon emissions

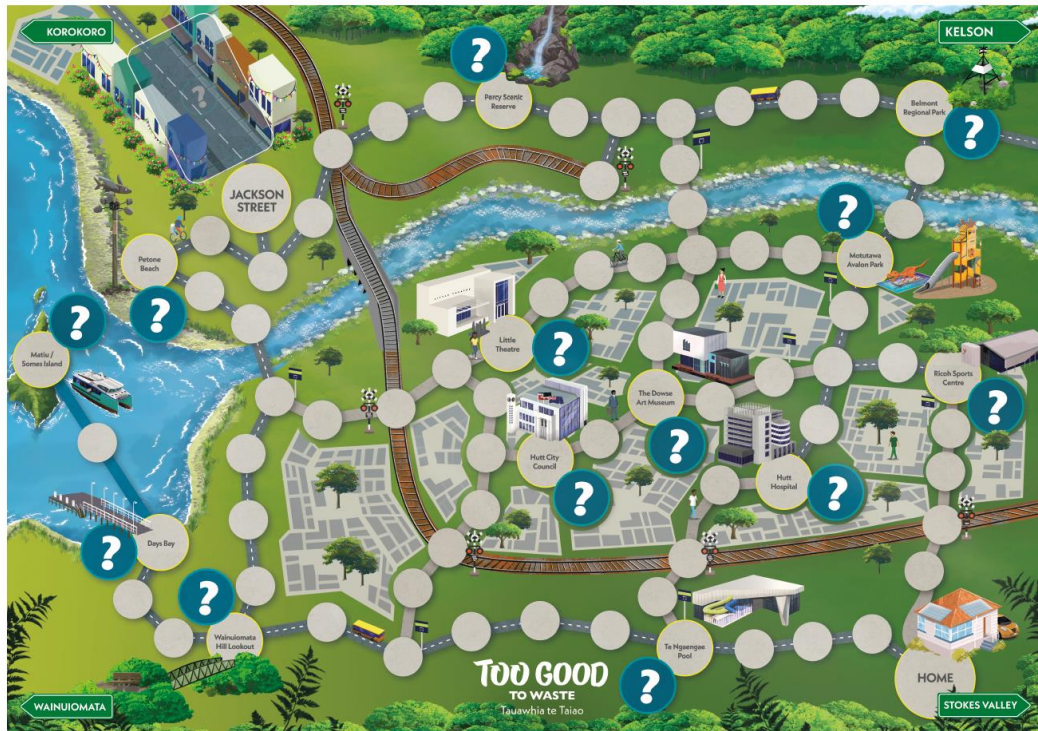
Low Carbon Acceleration Fund (LCA Fund)

19. Round #2 of the Low Carbon Acceleration fund (LCA fund) closed on 31 March 2025. Four applications were received, and three of those were awarded funding. The successful applicants and associated projects were:
- **Wildfinder Ltd:** For an electric vehicle to reduce the transport emissions from the business and help its customers not only enjoy a low emissions experience while out exploring nature, but also while being transported there.
 - **Rudolf Steiner School Trust:** To electrify their building heating by removing gas powered heaters and hot water and replacing with energy efficient heat pumps and a hot water cylinder. The school is working on reducing its emissions to lighten the footprint of its students' education.
 - **Wesley Wellington Mission - Rātā Village Naenae:** To install a large-scale solar array on the roof of a building being converted for social housing. This will reduce energy emissions for the building while also reducing power and heating costs for residents.
20. The total cost for all approved projects is \$50,457.81 (excl GST) from a total of \$160,000 available in the funding envelope. The remaining \$109,542.19 will be carried forward into the next round of LCA funding.
21. For round #2 of the LCA fund, promotional efforts were increased following learnings from Round #1. These promotional efforts included social media posts, direct emails, advertising in the Chamber of Commerce newsletters, briefing councillors and community board members about the fund (so they could encourage applications), and hosting two webinars that are now recorded and available anytime on the [website](#).
22. Despite increased efforts, application numbers were lower than Round #1, albeit the quality of applications was higher. With the economy still in recovery it is possible eligible entities were not ready or able to apply due to the 50% funding requirements for the LCA fund. Promotional opportunities for Round #3 are being explored to boost application numbers next year.

Chur the Hutt: Climate Explorers, game

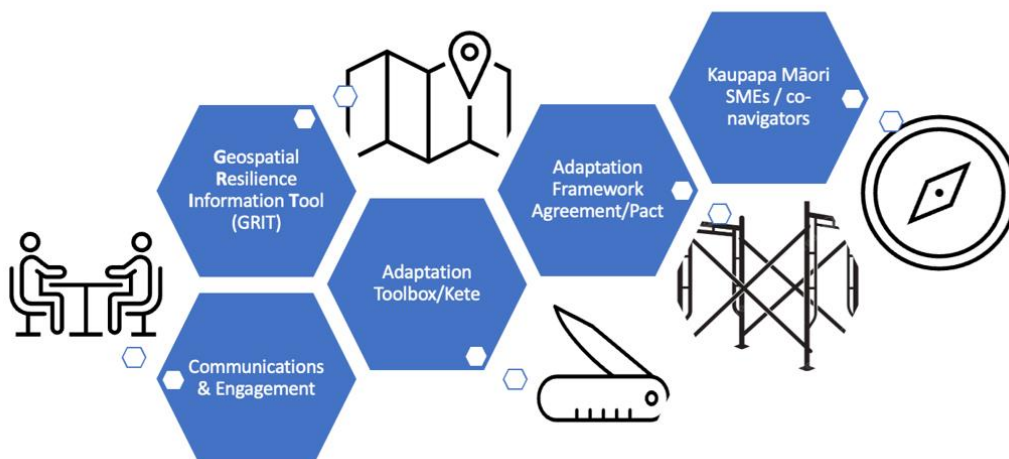
23. Building on the success of the [recycling game](#) launched in 2023, officers have worked with a creative agency to design a second game. The new game has a focus on climate action, including resource recovery, and builds on the [Chur the Hutt Climate Action Campaign](#) that ran in the last half of 2024.
24. Chur the Hutt: Climate Explorers takes players on a journey across Te Awa Kairangi ki Tai to well-known landmarks including Te Ngaengae Pool and Matiu/Somes Island. The game combines memory challenges with real-world sustainability lessons grounded in the Hutt Valley.

- 25. Players learn about practical actions to reduce greenhouse gas emissions, including waste reduction, switching energy sources and becoming more energy efficient. The game encourages families to explore how key changes can make a meaningful emission reduction impact.
- 26. The game is now available in hard copy at hubs and libraries in Lower Hutt or on the Too Good To Waste Website via downloadable PDFs that can be printed out at home. An image of the playing board is shown below.



Adapting to climate change

- 27. Phase Two of the Wellington Regional Leadership Committee’s (WRLC) [Regional Adaptation Project](#) is underway, starting with the Geospatial Resilience Information Tool (GRIT). This is one of four projects identified through the WRLC Adaptation Project, underpinned and informed by Kaupapa Māori Subject Matter Expertise (SME)/ Co-navigation.



28. A cross disciplinary workshop was held in early June 2025 to help refine the key procurement objectives for the GRIT and identify any co-benefits the tool could provide. One such benefit identified was how the tool could support councils to meet new legislation requirements for Land Information Memorandum (LIM) requirements to include hazards, which will come into effect on 1 July 2025. While the GRIT tool development will not be complete in time for the 1 July changes it will provide a longer term, time efficient solution for LIM officers to use when providing property specific hazard inform in the future.
29. The committee will be kept updated on the GRIT progress and other Adaption Project developments as they unfold.

Climate Change impact and considerations

30. This report responds directly to the need to reduce carbon emissions and respond to climate change by providing a regular update on Council's key carbon reduction and climate change response initiatives.

Consultation

31. Not applicable.

Legal Considerations

32. There are currently no legal considerations.

Financial Considerations

33. There are currently no financial considerations.

Appendices

No.	Title	Page
1↓	Locky Dock Project Plan	13

Author: Miriam Randall
Senior Advisor - Climate and Sustainability

Author: Jörn Scherzer
Head of Climate, Waste and Resource Recovery

Approved By: Alison Geddes
Director Environment and Sustainability

Locky Dock Project – HCC

Locky Dock is an innovative parking and locking system that allows bicycle users to securely park their vehicles while also offering charging capabilities. Designed to promote sustainable transport and enhance user experience, this system supports the use of active modes of travel within urban environments.

As part of a joint initiative between Hutt City Council (HCC) and Big Street Bikers (BSB), five Locky Dock units will be installed across selected locations in the Lower Hutt. This project aims to provide better infrastructure for environmentally friendly transport options while increasing the visibility and accessibility of active travel throughout the city.

Locky Docks are completely free to use for the public, making it easier and more affordable for everyone to choose active and low-emission transport. Users can easily access the system using either the Locky Dock app or a Locky Dock card.

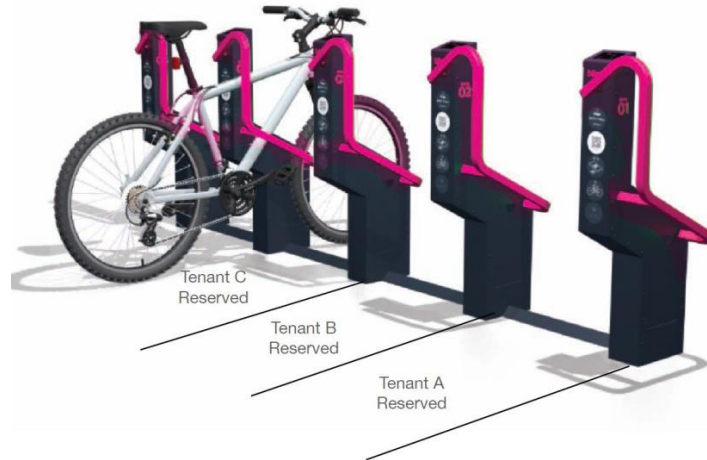
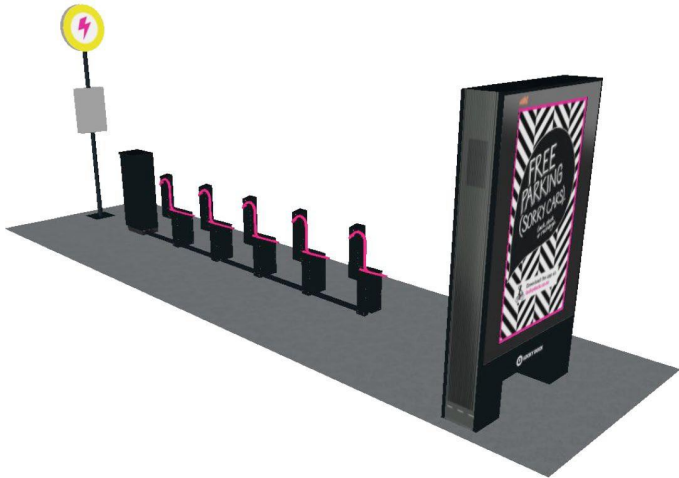


Two Types of Locky Dock Installations in Lower Hutt

In Lower Hutt, two different types of Locky Dock units will be installed to best suit the needs of each location.

At three of our sites (Te Ngaengae Pool, Stokes Valley Community Hub, Queensgate Shopping Centre), we will be installing the standard Locky Dock version, which includes 5 secure docking and charging stations with a digital screen.

At the remaining two locations (Dowse Art Museum and Petone Esplanade), a simplified version will be installed — a 5-rack unit without a digital screen.



LOCATIONS

1- Te Ngaengae Pool:

Why Te Ngaengae Pool Was Selected

One of the selected Locky Dock locations is Te Ngaengae Pool, which reopened last year and has since become a major community hub in the area. With high visitor numbers and a steady flow of people arriving by foot, bike, and e-scooter, this site presents a valuable opportunity to support active transport. Installing a Locky Dock unit at Te Ngaengae Pool not only encourages sustainable travel to and from the facility, but also aligns with broader goals to improve accessibility and reduce emissions in community spaces.



Estimated Installation Timeline

The installation of the Locky Dock units in Te Ngaengae Pool is expected to take place in June 2025, subject to final site preparations and coordination with project partners.

2- Petone Esplanade:

Why Petone Esplanade Was Selected

This location is Petone Esplanade, right in front of the Flying Bean Café. This site sits directly along the popular Remutaka Cycle Trail, making it a strategic point for supporting cycling and long-distance riders. Its close proximity to the cafés also makes it an ideal rest stop, allowing cyclists to securely park their vehicles while enjoying local amenities. By installing a Locky Dock here, we aim to enhance the experience for trail users and encourage more people to choose active transport along the coastal route.



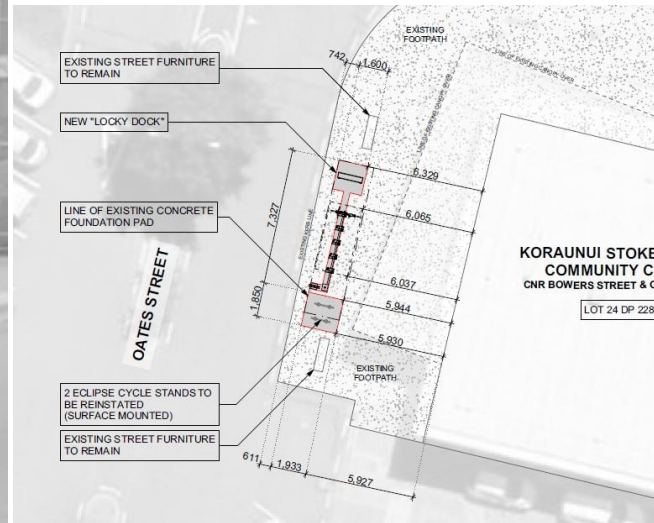
Estimated Installation Timeline

The installation of the Locky Dock units in Petone/Esplanade is expected to take place in August 2025, subject to final site preparations and coordination with project partners.

3- Stokes Valley Community Hub

Why Stokes Valley Community Hub Was Selected

The third selected location is in front of the Stokes Valley Community Hub, a well-frequented area with a large number of visitors each day. As a central community space, the hub attracts diverse groups, including families, students, and local residents. Installing a Locky Dock unit at this location will provide convenient, secure parking for cyclists, encouraging active transport to and from the hub. This installation will also support the community's efforts to promote sustainable travel options and improve access to local services.



Estimated Installation Timeline

The installation of the Locky Dock units in Stokes Valley Community Hub is expected to take place in July 2025, subject to final site preparations and coordination with project partners.

3- Queensgate Shopping Centre

Why Queensgate Shopping Centre Was Selected

Queensgate Shopping Centre is one of the busiest destinations in Lower Hutt, located right in the heart of the city. With a consistently high volume of foot, cyclist traffic and close proximity to public transport connections, this site is ideal for supporting active transport in the city centre. Installing a Locky Dock unit here will provide a secure and visible parking option for shoppers, commuters, and city visitors using bikes, while reinforcing sustainable travel choices in one of the most active urban zones.



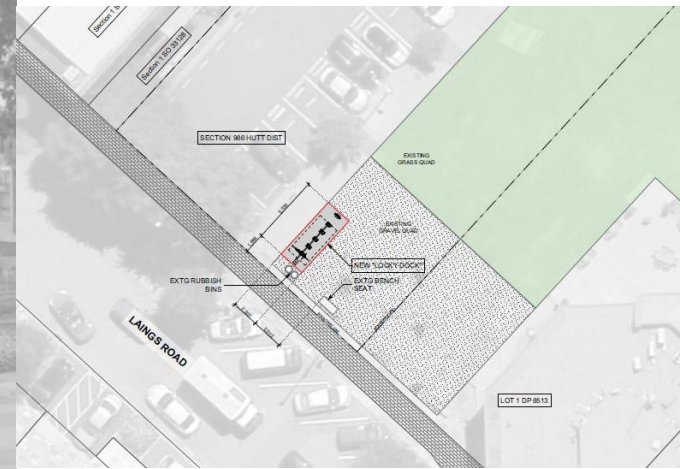
Estimated Installation Timeline

The installation of the Locky Dock units in Queensgate Shopping Centre is expected to take place in August 2025, subject to final site preparations and coordination with project partners.

4 - Dowse Art Museum

Why The Dowse Art Museum Location Was Selected

The final Locky Dock location is near The Dowse Art Museum, an area that also includes the Lower Hutt Events Centre and Council building. This site sits close to the Hutt River Trail and forms part of the greater Remutaka Cycle Trail network, making it a key point for both recreational and commuter cyclists. Its central location and proximity to major cultural and civic facilities make it a high-value site for supporting active transport. Installing a Locky Dock here will provide secure, visible parking for a wide range of users—from daily commuters to event attendees and visitors to the museum—encouraging more people to travel sustainably.



Estimated

Installation Timeline

The installation of the Locky Dock units in Dowse Art Museum is expected to take place in September 2025, subject to final site preparations and coordination with project partners.

Who Can Use Locky Dock?

Locky Dock stations are designed to accommodate a wide range of active transport users, including:

- **Standard bicycle users** – making up approximately 60–70% of expected users
- **E-bike riders** – including those commuting or travelling longer distances
- **Cargo bike users** – particularly valued due to the high cost and theft risk of these bikes
- **Mobility scooter users** – with some sites (e.g., Whangārei) already seeing regular use for charging



09 June 2025

Report no: CCASC2025/3/191

Update on Waste and Resource Recovery Matters

Purpose of Report

1. This report consolidates information on the status of Council's solid waste management and minimisation initiatives.
2. Detailed and regular information on the ongoing development, operation and performance of the Silverstream Landfill is covered in a separate report to the Hutt Valley Services Committee. The latest report from May 2025 is [available online \(page 41\)](#).

Recommendation

That the Committee receives and notes the update on various waste management and resource recovery matters.

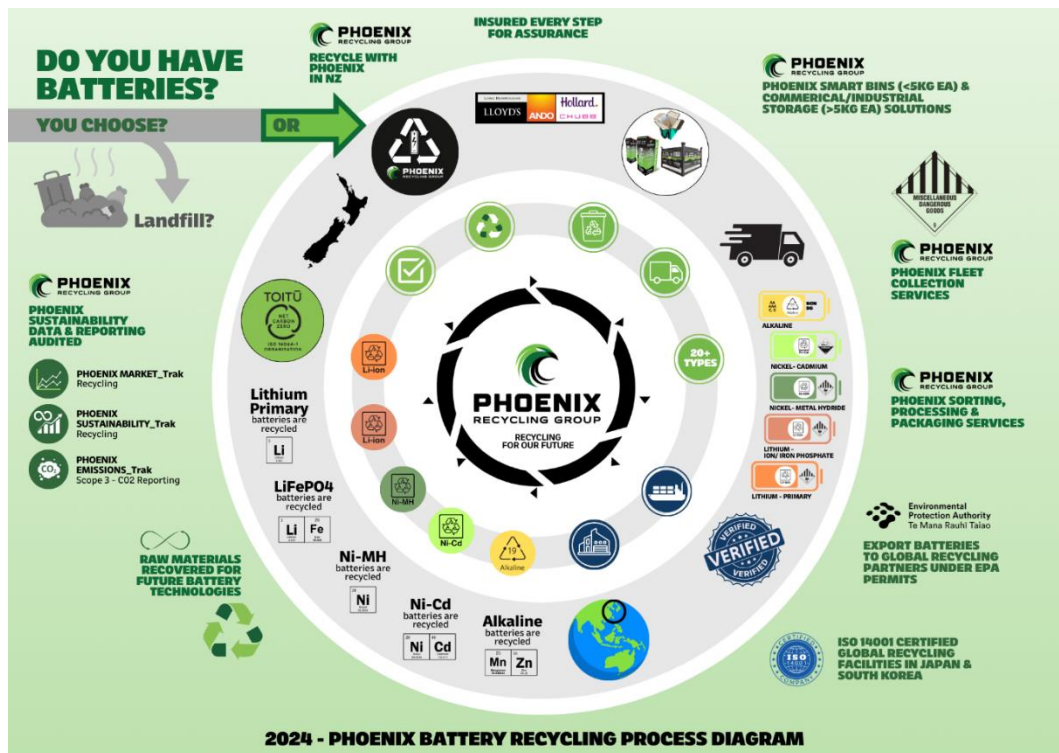
Implementation of Wellington Region Waste Management and Minimisation Plan 2023-2029 (WMMP)

3. To provide the Committee with a regular progress update on the projects underway or planned to implement the WMMP, including Hutt City Council's local actions, an updated project dashboard is shown in Appendix 1.

Battery recycling supply chain assurance

4. Following the announcement of the battery recycling service due to roll out across Council's community hubs, Council requested assurance regarding the end destination of collected batteries. Officers have confirmed the recycling supply chain and associated compliance measures as outlined below.

5. All batteries collected through this service will be transported to Phoenix Recycling Group’s dedicated battery export yards in Auckland and Christchurch. At these facilities, batteries are sorted, segregated by chemistry, and packaged in accordance with relevant regulations in preparation for export under an Environmental Protection Authority approved Hazardous Waste Licence.
6. New Zealand is party to several multilateral environmental agreements, including the Basel Convention, which regulates the international movement of hazardous waste. The Convention requires prior consent for all imports and exports of hazardous waste and obligates exporting countries to ensure the waste is managed in an environmentally sound manner. Currently, the batteries are sent to [ISO 14001](#) certified recycling facilities in Japan and South Korea.
7. Phoenix Metal Recyclers NZ Limited is Toitū Carbon Zero certified and will provide Council with annual battery recycling certificates, confirming the total volume of batteries recycled each calendar year.
8. The diagram below provides an overview of the Phoenix battery recycling process.



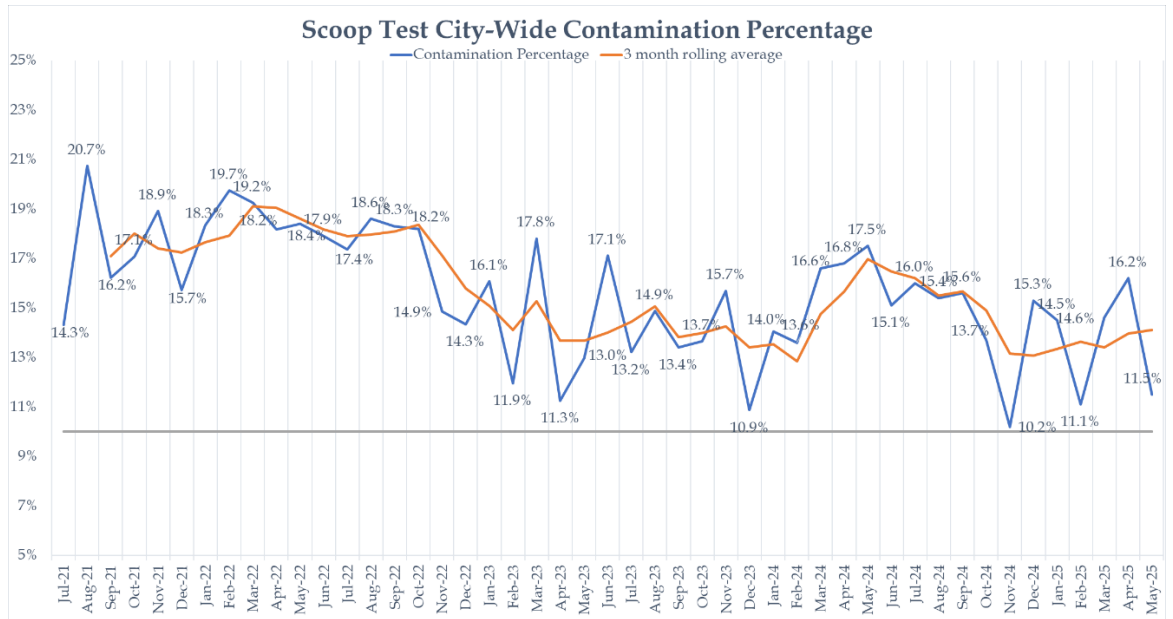
Strengthening the Wellington Region Waste Forum R3 project

9. The Waste Forum, Wellington Region Incorporated Society (Forum) is a long-standing independent non-profit organisation. The Forum has served as a key platform for collaboration and discussion on waste management and environmental issues for the past 45 years. The forum facilitates networking and information sharing among commercial operators, council officers, elected representatives, government agencies, and other organisations active in the sector. Its objectives include:

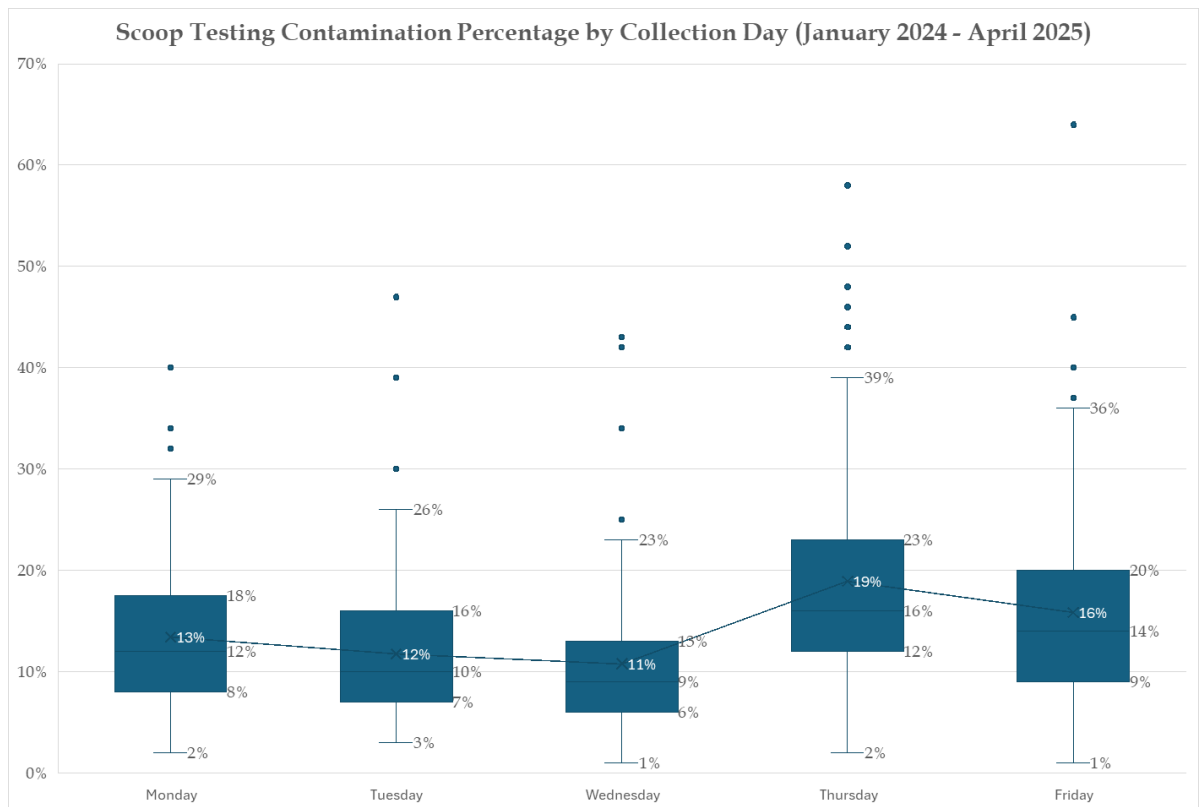
- a. Generating awareness of waste minimisation, resource efficiency, and resource recovery.
 - b. Facilitating the exchange of feedback and information to member organisations.
 - c. Promoting regional environmental campaigns and encouraging environmentally sound policies and practices among local authorities.
 - d. Liaising with other agencies, including central government, on environmental issues.
 - e. Staying informed about environmental issues through its network.
10. Hutt City Council has played a key role in supporting the Forum's operations, with a Hutt City councillor serving as Chair and council staff fulfilling the Secretary and Treasurer roles since approximately 1980.
 11. Participation and engagement in the Forum have declined over time, particularly among industry and NGOs. This was recognised in the WMMP as an area to improve on and in response a regional project (Strengthening the Wellington Waste Forum R3) has been underway to strengthen the Forum. This includes a focus on re-establishing existing relationships and building new ones by enhancing the Forum's value, importance, and relevance to its original target audiences.
 12. As part of this effort Hutt City Council will be hosting the fourth Forum delivered under the rejuvenation project this month, on 25 July 2025 at the Dowse Art Museum, themed "*Lifting the Lid on Waste – Turning Insights into Action*". This will include presentations from event waste, construction and demolition waste, waste education and landfill management experts among others.

Contamination

13. The contamination rate for April was 16.2%, and for May was 11.5%. However, the three-monthly and six-monthly rolling averages are at 14.1% and 13.9% respectively.
14. The scoop tests that make up the April monthly average had three more contaminated scoops with 52%, 37% and 39% contamination by weight that increased the monthly average significantly. Excluding these outliers, the monthly average across the scoop tests was 12%.



15. For further context, the graph below shows analysis of the scoop testing data from January 2024 across the collection days. This shows that the Wednesday collection day has the lowest contamination rate on average (and less spread of contamination rates across tests). Thursday is the highest and has more of a spread of contamination rates across tests.



16. For each collection day, the suburbs collected from are:
- Monday - Waiwhetū, Eastbourne, Moera, Fairfield, Waterloo
 - Tuesday - Petone, Alicetown, Hutt Central, Woburn
 - Wednesday - Normandale, Maungaraki, Korokoro, Epuni, Belmont, Boulcott, Avalon, Tirohanga, Haywards
 - Thursday - Stokes Valley, Taitā, Naenae
 - Friday - Kelson, Wainuiomata
17. Targeted work has been undertaken for the suburbs that are showing higher contamination in scoop testing and sticker data. This includes:
- Distributing a multilingual booklet in Taitā and Wainuiomata (also available [online](#)),
 - Hazardous material reminder letters sent to Pōmare and Stokes Valley (in response to scoop testing data showing incidences of hazardous materials from collections in these areas), and
 - Leaflets delivered to Fairfield, Waterloo, and Naenae.
18. Officers have also begun work to engage the new behaviour change agency on contamination reduction. One focus will be on designing targeted local communication initiatives and preparing FAQ response resources for easy access for residents (and to support staff training) in community spaces such as libraries and hubs.

Climate Change Impact and Considerations

19. The matters addressed in this report have been considered in accordance with the process set out in Council's Climate Change Considerations Guide.
20. Minimising waste, diverting recyclables from landfill, and recovering reusable materials (such as the potential addition of C&D diversion opportunities, diverting biosolids, etc.) contribute to a more circular economy. These activities reduce the need to extract further resources from the environment and the associated energy use.

Consultation

21. Not applicable.

Legal Considerations

22. Not applicable.

Financial Considerations

23. There are no current financial considerations at this time.

Appendices

No.	Title	Page
1	Appendix 1 - WMMP Local Action Plan Programme Dashboard	28

Author: Jessica Hayman
Senior Advisor Waste - Planning and Strategy

Reviewed By: Jörn Scherzer
Head of Climate and Waste

Approved By: Alison Geddes
Director Environment and Sustainability

Appendix 1. Summary of WMMP Local Action Plan Programme Dashboard

There are currently 29 projects, the majority of which are planned or already underway to meet the actions outlined in the WMMP (2023-2029), outlined in the programme summary below.

Name	LAP Action*	Regional/Local	Stage	Project Description	Project type	Subject matter	Project impact**	Project update
City wide behaviour change	Action 7	Local Project	Completed	Procuring a provider to deliver campaign(s) to support waste minimisation.	Comms/engagement	Behaviour change	High Weight	The procurement process for a new agency was completed (EightyOne). Work is now underway for two upcoming campaigns - Litter & illegal dumping and Recycling contamination.
Kerbside - Contamination reduction	Action 19	Local Project	In progress	Investigate and implement a range of actions to address and reduce kerbside contamination.	Comms/engagement	Kerbside	High Weight	Contamination reduction work continues, this includes work with the new behaviour change agency EightyOne (contract signed in Q4) to support targeted engagement and refreshed use of existing assets and graphics.
EV Charging Hub and landfill electrification	Action 20	Local Project	Completed	Install EV Charging Hub for heavy vehicles and machinery at the Silverstream Landfill.	Operational	Silverstream	High Weight	Civil construction work was completed in March 2025. The installation of charging equipment was completed in June 2025, and EV chargers are now operational. We are now working with WMNZ to firm up their plans for electrified equipment to be utilised in landfill operations.
Bylaw Implementation (C&D waste)	Action 9	Local Project	In progress	Implementation of the bylaw requirement to have waste management and minimisation plans for new developments over \$2M in value.	Operational	Compliance	High Weight	C&D bylaw implementation is progressing, with regional scoping ongoing and initial work underway with internal consents teams to identify implementation triggers, and to design associated processes.
FOGO kerbside collection and processing	Action 12	Sub-regional Project	In progress	Plan and implement a potential new kerbside FOGO service, and identify a suitable processing solution.	Operational	Organics	High Weight	A detailed project update was provided to the LTP subcommittee on 24 February 2025. Officers are scheduled to provide an updated report to Council in early 2026. Note that the final stage of the procurement has been put on hold by WCC until August 2025, due to a report back and associated decisions by WCC regarding the potential of a local processing solution at Southern Landfill.
Future of residual waste	Action 11	Regional Project	In progress	Undertake an investigation to assess the regional flow of waste and the current and future infrastructure and services required to manage known and future residual waste streams (including disposal or alternatives). HCC leads this regional project.	Policy	Research	High Weight	Data collation is underway. There have been discussions with other councils in the region on available data and opportunities for updated SWAPs to be commissioned, which would support more accurate modelling.
Minimising Event Waste	Action 2	Local Project	In progress	Establish and embed a process with internal and external stakeholders to minimise waste and litter at community events over 1000 attendees.	Operational	Events	Medium Weight	A trial is still under way with Non-Stop Solutions to partner with event organisers to ensure best practice waste management and minimisation for community events. The trial is coming to a close, and the team is working on options for continuing to support large events, as well as options for expanding support to minimise waste at smaller events.
C&D commercial solution	Action 13	Sub-regional Project	On hold	Investigate and implement diversion pathways for commercial C&D waste.	Operational	C&D	Medium Weight	HCC is working with stakeholders to prepare Silverstream Landfill for a trial diversion pathway to a recovery facility in the Manawatū. This is an interim solution while the Porirua processing facility progresses under the subregional project. The project is on hold due to delivery capacity at Silverstream.
Soil and aggregate recycling	Action 12	Local Project	In progress	Collaborate with partners to potentially develop a soil and aggregate recycling facility at Silverstream Landfill.	Operational	Contaminated Soil	Medium Weight	HCC has provided updated data to Fulton Hogan, to inform the development of their commercial model and business case. We are waiting on Fulton Hogan to advise on next steps, albeit we understand there are some concerns to progress the project in the current uncertain economic climate.
Waste Forum	Action 6	Regional Project	In progress	Provide Secretary and Treasurer support for the Forum, and maximise the effectiveness of the Waste Forum.	Comms/engagement	Events	Medium Weight	Planning is underway for hosting the Waste Forum in Lower Hutt on 25 July 2025. Work is also under way to identify opportunities for further improving the effectiveness and reach of the Forum.
Silverstream resource recovery improvements	Action 4	Local Project	In progress	Identify and implement transfer station and Zero Waste Hub improvements to increase diversion of recoverable materials.	Operational	Resource recovery	Medium Weight	As an addition to the materials already diverted through the discount voucher scheme (operated by Earthlink Inc), officers are progressing with adding other waste streams such as native timber, plate glass as well as establishing a drop off as part of the Tyrewise scheme.
Business engagement	Action 4	Regionally Coordinated	Not started	Develop a business engagement plan consistent with agreed regional approach.	Comms/engagement	Business	Medium Weight	Not yet started.
Business waste audits	Action 4	Local Project	Not started	Offer and deliver audits to engaged businesses as part of business engagement plan	Comms/engagement	Business	Medium Weight	Not yet started.
Treated timber diversion research	Action 11	Local Project	On hold	Research diversion opportunities for treated (and untreated) timber.	Operational	Research	Medium Weight	Trial is on hold while discussions around regional and industry co-funding options are explored.
EDL soil remediation trial	Action 12	Sub-regional Project	On hold	The company EDL has proposed a trial of a technology to neutralise recalcitrant soils (eg contaminated with asbestos).	Operational	Contaminated Soil	Medium Weight	In Q4, EDL advised that some of the funding to enable the trial was withdrawn by the UK Government. This has resulted in a funding shortfall, and HCC and EDL are exploring alternative funding options to continue the pilot/trial of their technology at the Silverstream Landfill.
Bylaw review	Action 9	Regionally Coordinated	Planning	Undertake a review of Council's Solid Waste Management and Minimisation Bylaw 2023-2029 in line with statutory requirements (regionally coordinated).	Policy	Various	Medium Weight	Not yet started.
Contaminated soil	Action 12	Regional Project	Planning	Lead on regional project to investigate the quantum, source, degree of contamination, and fate of contaminated soil from around the region and identify opportunities to support diversion from landfill disposal.	Policy	Contaminated Soil	Medium Weight	HCC team presented to the Regional Steering Group on a recommended revised scope for the project and the likely need for external support on data analysis.
Site remediation	Action 21	Local Project	In progress	Identify and implement remediation options for closed landfills.	Operational	Research	Low Weight	The Gollan's Valley farm has been purchased by GWRC. The closed Eastbourne Landfill is located on the farm property, and this could simplify any future remediation works at the landfill. HCC is in discussions with GWRC on remediation options.
Regional project contributions		Regionally Coordinated	Ongoing	Providing input and subject matter expertise on various Regional WMMP projects that are led by other Councils or centrally by the WMMP Programme Manager and Regional Advisor.	Policy	Various	Low Weight	Underway through the Regional Data Framework, Regional Website development, Waste in Emergencies and other active projects.

* Projects related to Actions 1 and 17 are delivered through contracts delivered by external providers and are treated as business as usual (Enviroschools contract, Sustainable Coastlines contract).

**Project weight is calculated from a weighted formula that includes 'priority', 'diversion potential', 'reach', and 'budget'.

Appendix 1. Summary of WMMP Local Action Plan Programme Dashboard

There are currently 29 projects, the majority of which are planned or already underway to meet the actions outlined in the WMMP (2023-2029), outlined in the programme summary below.

Biosolids trial at Silverstream	Action 15	Local Project	Completed	Trial the reuse of biosolids in borrow areas of Silverstream Landfill.	Operational	Silverstream	Low Weight	The trial at the landfill involving planting into soil mixed with dried biosolids proved successful, with the highest application of biosolids correlating with the greatest plant growth. As a result, Council is in the process of applying for consent to apply dried biosolids to the borrow areas prior to planting.
Litter reduction campaign	Action 18	Local Project	Not started	Implement city-wide campaign on litter and illegal dumping.	Comms/engagement	Litter	Low Weight	Scoping work is underway. Research, development and creative design is likely to take at least three months.
Additional zero waste hub	Action 12	Local Project	On hold	Investigate options for a potential additional Zero Waste Hub facility, including working with existing resource recovery partners to expand operations.	Operational	C&D	Low Weight	Scoping on this project is on hold due to team capacity.
Organisational behaviour change	Action 2	Local Project	In progress	Implement waste minimisation initiatives internally (at Laing's Road administrative building) and across council facilities.	Internal	Behaviour change	Low Weight	Results from a waste audit at Laings Road admin building are being analysed to inform a targeted campaign and system-level solution proposals.
Stormwater treatment trial	Action 18	Local Project	In progress	Trial a Downstream Defender unit to capture gross pollutants, litter, and fine contaminants in stormwater to provide baseline data for waste and pollutants entering waterways. and for a proof of concept to improve stormwater quality.	Operational	Litter	Low Weight	HCC is investigating options to reduce the estimated costs of installing the device. Unless costs be reduced, the trial won't be affordable. Procurement planning is underway to identify preferred suppliers and to determine if the project can be undertaken within existing funding parameters.
Embedding waste reduction in procurements	Action 3	Local Project	Not started	Create and implement a policy for reducing waste in contracts and services procured across HCC.	Internal	Waste minimisation	Low Weight	Not yet started.
CBD single-use transition engagement	Action 4	Local Project	On hold	Work to transition Lower Hutt CBD to a single-use free city, with a primary focus on eliminating disposable coffee cups and supporting reuse.	Comms/engagement	Waste minimisation	Low Weight	Early engagement with businesses is underway to inform the development of a potential campaign and/or implementation options.
Decarbonise landfill contracts	Action 3	Local Project	Complete	Ensuring newly awarded waste contracts reduce emissions within contract activity and to report on contract emissions annually with alignment with HCC decarbonisation targets.	Internal	Waste minimisation	Low Weight	All significant waste-related procurements have included specific emission reduction requirements and/or criteria. The landfill capex works contract, the landfill design and monitoring contract, and the closed landfill maintenance contracts, have been finalised and signed. Management of those contracts now moves into BAU, albeit we will continue to work to identify improvement opportunities regarding carbon reductions where possible. This this stage, significant waste contracts are not coming up again for renewal until 2028.
Central government advocacy	Action 10	Local Project	In progress	Central government advocacy opportunities are approached from a regional perspective or local perspective, if and when appropriate.	Comms/engagement	Various	Low Weight	A submission was made on the Ministry for the Environment's proposed changes to the Waste Minimisation Act 2008 and Litter Act 1979. Preparation for this submission included information sharing with regional officers on the likely areas of focus for each Council.
Battery Recycling	Action 2	Local Project	In progress	Investigate options, and if viable implement, accessible battery collection for recycling for Lower Hutt residents.	Resource Recovery	Resource recovery	Low Weight	A preferred supplier has been selected, and implementation is planned for July in the first three hubs.

* Projects related to Actions 1 and 17 are delivered through contracts delivered by external providers and are treated as business as usual (Enviroschools contract, Sustainable Coastlines contract).

**Project weight is calculated from a weighted formula that includes 'priority', 'diversion potential', 'reach', and 'budget'.

Our Reference



TO: Chair and Members
Climate Change and Sustainability Committee

FROM: Jessica Hayman, Senior Advisor Waste – Planning and Strategy

DATE: 09 June 2025

SUBJECT: RETROSPECTIVE APPROVAL MEMORANDUM FOR SUBMISSION TO CONSULTATION ON PROPOSED CHANGES TO WASTE LEGISLATION

Purpose of Memorandum

1. The purpose of this memorandum is to present the Committee with a submission to the Ministry for the Environment (MfE) on the proposed changes to the Waste Minimisation Act 2008 and Litter Act 1979, and to seek the Committee's retrospective approval for this submission.

Recommendation

That the Committee:

- (1) notes and receives the memorandum; and
- (2) retrospectively approves the submission to the consultation on the proposed changes to the Waste Minimisation Act 2008 (WMA) and Litter Act 1979 attached as **Appendix 1** to the memorandum.

Background

2. The proposed changes to the WMA and Litter Act include:
 - a. creating a framework for extended producer responsibility;
 - b. changes to the levy system including waste levy allocation, distribution and options for use by local government;
 - c. amending roles and responsibilities in the waste legislation;
 - d. creating a more modern compliance regime;
 - e. enabling greater controls for littering and other types of mismanaged waste.
3. Many of the changes proposed would modernise the legislation and make it more fit for purpose. However, the submission goes into detail on several areas of concern and/or ambiguity and recommends further consideration or change. This includes, for example, the proposed expansion of options for local government spending of waste levy funds to non-waste related activities.

4. Submissions on the consultation closed on Sunday 1 June 2025, approximately one month before the Climate Change and Sustainability Committee's meeting. To ensure Council can have its say, the submission was submitted to MfE on Thursday 29 May and retrospective approval is being requested.
5. The submission was reviewed by Acting Mayor Simon Edwards, Chair Josh Briggs and Deputy Chair Chris Parkin (Climate Change and Sustainability Committee) and Councillor Andy Mitchell (Deputy Chair of the Wellington Region Joint Waste Management and Minimisation Committee) before being submitted with feedback incorporated.
6. The submission is attached as **Appendix 1** to the memorandum.

Appendices

No.	Title	Page
1↓	Appendix 1 - HCC Submission on Proposed Changes to Waste Legislation	31

Author: Jessica Hayman
Senior Advisor Waste - Planning and Strategy

Reviewed By: Jörn Scherzer
Head of Climate, Waste and Resource Recovery

Approved By: Alison Geddes
Director Environment and Sustainability



By email/online consultation

29 May 2025

Email to: wasteamendment@mfe.govt.nz

Tēnā koutou katoa,

Proposed amendments to the Waste Minimisation Act 2008 and the Litter Act 1979

1. Hutt City Council welcomes the opportunity to provide feedback on the proposals to amend the Waste Minimisation Act 2008 (WMA) and Litter Act 1979 (Litter Act).

Background

2. Hutt City Council's role in waste management and resource recovery includes the operation of kerbside waste, recycling and green waste collection, operating Silverstream Landfill, monitoring and managing closed landfills, and investigating, trialling, and implementing a range of initiatives to increase resource recovery.
3. The Councils across Wellington Region have committed to a 2023–2029 Waste Management and Minimisation Plan (WMMP) that recognises the need to transition to a more circular economy.
4. As landfill capacity decreases, it is crucial to maximise resource recovery to keep valuable materials in circulation, benefit community health and protect the environment and climate. Local government currently carries much of the burden of waste management including disposal and resource recovery with few levers to influence the nature and magnitude of waste being produced in the first instance.

Overview

5. Fit-for-purpose waste legislation is needed to enable local government to play its role and Hutt City Council welcomes many of the proposed changes

30 Laings Road, Lower Hutt
Private bag 31912, Lower Hutt 5040

 /huttcitycouncil 0800 488 824

contact@huttcity.govt.nz
www.huttcity.govt.nz

▲ The pattern at the top of this page is inspired by the natural landforms, hills, river, and coastline surrounding Lower Hutt. It represents our people, our place, and our home.

set out in the Consultation Document. For example, Hutt City Council is particularly supportive of the proposed changes to:

- a. Establishing an extended producer responsibility framework that shifts end-of-life product recovery costs and responsibilities from councils to producers, importers, and relevant users.
 - b. Removing central government accreditation of voluntary product stewardship schemes. The voluntary accreditation process is resource intensive, and this resourcing would be better refocused on mandatory and enforceable schemes that reduce the burden of waste on councils and households.
6. There are several areas of concern in the Consultation Document that Hutt City Council would like to provide more specific feedback on. This feedback is set out in full in this submission, and summarised below:
- a. **Oppose** expansion of local government levy scope without significant changes and clarification; and
 - i. **Recommend** limitations to proposed options and proportion of levy spend available to non-waste minimisation activities.
 - b. **Seek consideration** of differentiation between types of waste to energy facilities in relation to proposed removal of blanket levy exclusion; and
 - i. **Set out** examples of waste-to-energy with differing inputs and outcomes for consideration.
 - c. **Oppose** proposed change to the role of the Minister for the Environment to enable Minister to direct territorial authorities to do a particular activity through the WMMPs, in the absence of clearer justification for this proposal and/or full funding by central government so as to avoid circumvention of local decision-making with regards to rate increases.
 - d. **Support** proposed changes to compliance and enforcement; and
 - i. **Seek clarification and engagement** on system design as it relates to bylaw enforcement.
 - e. **Largely support** compliance changes as they relate to mismanaged waste (including cost recovery and compensation).

- i. **Recommend** retention of low-level fines and an increase to the maximum infringement fine.

Waste disposal levy

Consultation questions 4 and 5 – expansion of local government levy scope

7. Hutt City Council does not support the proposed scope of options that would be eligible for levy funding without significant changes and clarification.
8. The burden of planning for and operating waste collection and management services in a take-make-and dispose economy currently falls on councils and ultimately residents across the country. Broad expansion of the options for levy spending to activities with little or no connection to reducing this burden is likely to undermine the levy function. This is of particular concern in a time of rising costs and constrained budgets, when some councils will easily be tempted to divert levies to purposes other than waste management and minimisation. The government should be mindful of unintended consequences such as redirection of funding away from diverting organic waste from landfills, which is critical for meeting council and government emission reduction targets.

Purpose of the levy

9. The purpose of a levy is to raise funds from a group or activity and earmark this funding for costs that relate to that activity or a relevant function, as opposed to a general tax for wider use.¹ This is the basis for raising the waste levy on disposal and ring fencing it for waste minimisation actions. Over time, levy funding may reduce as diversion increases and disposal decreases.
10. The proposed expansion of levy spending options for local government would be in addition to an already expanded scope for central government levy spending. This includes options to spend levy funds on some projects that are not required to relate directly to waste (including for example,

¹ LDAC, Legislation Guidelines 2021 Edition, paragraph 17.2.

activities that reduce environmental harm or increase environmental benefits).

Inconsistent planning and reporting requirements

11. Reducing the burden of waste on disposal facilities, households and the environment requires long term planning and sustained actions. It is unclear whether the expanded options for levy funding would be subject to the same planning and consultation requirements currently undertaken for the development of a WMMP. This planning, and the current levy reporting requirements provide important certainty, transparency and accountability to communities.

Need to ringfence funding for waste minimisation spending, and limit broader spending from levy funds

12. Existing landfill capacity across the Wellington Region is under significant pressure and effective waste minimisation is urgent and fundamental to community and environmental health. This is particularly important where it reduces the need for further landfill locations or alternative disposal.
13. Any expansion of the scope of options for levy spending that does occur beyond waste minimisation should be limited by legislation to a minor proportion of the local government levy spend, with requirements to ringfence funding for waste minimisation actions to support effective diversion.

Specific feedback on proposed options for permitted levy expenditure

14. Option a) *Activities that promote or achieve waste minimisation, in accordance with and as set out in the territorial authorities' Waste Management and Minimisation Plan*
 - a. The current WMMP for Wellington extends out to 2029 and is supported by clear strategy and long-term planning. Many of the actions and targets require funding certainty to support crucial progress. Care needs to be taken to ensure that this status quo approach is not undermined if funding is diverted to other projects and activities outside of the scope of waste minimisation.

- b. Sufficient and certain funding for staffing resource for many Councils is also required as a minimum to support WMMP actions, as supported in the Consultation Document through the 80:20 levy distribution proposal.
 - c. Some expansion of scope or additional clarity would be useful for activities such as education programmes that cover waste and other environmental issues to support better consumption patterns and lower waste impacts. Projects such as these that have a large waste minimisation component, but also other behaviour change, and sustainable resource use objectives would usefully be captured squarely under a WMMP with clear levy eligibility as a waste minimisation project overall.
15. Option b) *Costs associated with managing emergency waste*
- a. Any provision for emergency waste from the levy funding would need to be planned for and set aside as a contingency to ensure that it does not undermine planned expenditure for committed actions for waste minimisation.
 - b. This expansion also overlaps significantly with the existing provision for central government to spend their levy portion on “funding local authorities to manage emergency waste and to repair or replace waste management and minimisation infrastructure damaged by an emergency”. Further clarity is needed on the interface of this funding and how it will be triggered by an emergency declaration and accessible to local authorities.
 - c. Consideration could also be given to focusing the option for local government spending on waste minimisation in this area in emergencies (for example recovery of construction and demolition waste). This could work alongside the central government levy portion contribution to managing waste and infrastructure repair.
16. Option c) *Activities that provide for the remediation of contaminated sites and vulnerable landfills*
- a. This should only apply for legacy sites that at least pre-date the introduction of the levy in 2009. All recent and current disposal

activities or contaminating activities should have reserves for remediation costs already and should not be eligible for levy spending to clean up or remediate those sites.

- b. Levy funding should not be available for monitoring and general maintenance of closed landfills that is likely already required and undertaken under consenting requirements. However, step change improvements and remediation would be more appropriate for funding eligibility, including for example gas destruction and capture at closed landfills.

17. Option d) *Compliance, monitoring and enforcement of mismanaged waste*

- a. Enabling levy spending on compliance, monitoring and enforcement of mismanaged waste is consistent with the changes proposed to bring the Litter Act responsibilities into the same piece of legislation.
- b. However, as discussed above, clear requirements must be set to ensure the proportion of levy spend on this is limited to ensure that waste minimisation remains the priority for levy spending.

18. Option e) *Activities that reduce environmental harm or increase environmental benefits*

- a. It is not appropriate to expand the levy spend options this broadly unless strong limitations are in place to ensure planning and spend reporting is accountable and transparent and clearly linked to reducing resource use and the resulting waste or emissions.
- b. Relying on a decision-making framework as proposed is likely to be too high level and out of step with the clearer WMMP requirements that apply to waste actions funded from the same levy.

Consultation question 6 – Waste-to-energy exclusion

19. The removal of a blanket exclusion for applying the levy to waste to energy facilities should be subject to consideration on the appropriate differentiation (via regulations) between the different waste to energy facilities. This is to ensure that this change does not lead to unintended policy outcomes, such as reducing the incentive to utilise the technologies to divert waste or recover resources. For example:

- a. Facilities such as anaerobic digestors for food or green organics that have a more renewable feedstock as well as output materials with beneficial use should not be subject to the levy. Ideally, the destruction of valuable nutrients should be avoided altogether in a circular approach to resource recovery.
- b. Single streams of waste materials that can displace fossil fuels such as coal should also be considered for levy exemptions or reductions where there is no other beneficial use of that material currently. For example, treated timber co-incineration at Golden Bay Cement.
- c. Any facilities receiving unsorted or municipal solid waste feedstock that would accept and treat the same waste as landfills could be subject to the levy as the facility would receive similar waste, destroy waste without producing recoverable materials, have potentially significant externalised environmental and health impacts that are not yet tested in the New Zealand regulatory context and may displace renewable energy sources.

Clarifying the roles and responsibilities in the waste legislation

Consultation question 17

20. Hutt City Council does not support the proposal to enable the Minister to direct territorial authorities to do a particular activity through the WMMPs (in addition to current powers to amend, add or omit provisions where a WMMP is inadequate).
21. The justification for such a change is not clearly set out in the Consultation Document. Policy direction including mandates are already set by Central Government, as are waste strategies to which Councils must have regard to when developing WMMPs. These levers could be strengthened, if necessary, without going as far as directing specific activities in a WMMP.
22. WMMP activities are funded from the local government portion of the levy and developed in consultation with local communities. Care needs to be taken not to undermine this process of accountability and support building from key stakeholders. Councils and their ratepayers already struggle under the burden of frequent unfunded mandates which add to or can supersede

the careful consideration of rates funding decisions by locally-elected representatives.

Compliance and data regime, and cost recovery for waste removal

Consultation question 21

23. Hutt City Council supports improvements to compliance tools and sanctions. Additional clarity would be useful on how the proposed tier system and other tools may better support effective council bylaw enforcement. Waste bylaws can span many activities including multi-unit development (MUD) waste provision requirements and kerbside rubbish and recycling compliance.

24. The nature of enforcement and compliance challenges in these bylaws can differ greatly depending on the regulation activity. For example, the impact of an infringement fee or caution for an individual that has created litter issues may differ greatly to a MUD developer that fails to comply with an approved waste plan.

25. Hutt City Council looks forward to seeing further detail on the amended framework once established and would like to see engagement with councils where appropriate as the specifics of these matters are developed.

Consultation questions 32 and 35

26. Hutt City Council supports the proposal that infringement fees (monies recovered) remain with the issuing authority as it is now under the Litter Act 1979.

27. There is some concern about the proposed compliance framework. Currently an infringement fine of \$100 is appropriate for illegal bag use, or small-scale littering, however the proposal speaks about "*low level disciplinary action, such as formal warnings for infringements*". It is preferred that current provisions not be diluted, and that an infringement fine is still appropriate for small scale offending. Hutt City Council also supports the proposed tiered infringement system responding through the fine levels to repeat offenders that offend multiple times within a defined period.

28. There is currently a limit on the maximum infringement fine that authorities can issue, being \$400. In some instances of illegal littering, the amount of litter deposited is very large, e.g. small truck load. The cost of collecting and disposing the litter is often well above the maximum fine. It is submitted that the maximum infringement fine be increased to at least \$1000, for litter dumping of say more than 4 large bags.
29. An alternative could be the ability for authorities to cost recover for their costs, without the need for a formal court prosecution, and court order. Cost recovery should still be in addition to the maximum fine. The Consultation Document includes reference to proposals to enable sufficient cost-recovery provisions for CME and clean-up and potential compensation, if the littering and/or dumped waste causes environmental harm. These changes would support deterrence, and we look forward to seeing more detail in the legislation on how these tools would work

18 June 2025

Report no: CCASC2025/3/188

Climate Change and Sustainability Committee Forward Programme 2025

Purpose of Report

1. To provide the Committee with a Forward Programme of work planned for the Committee for 2025.

Recommendation

That the Committee receives and notes the Forward Programme for 2025 attached as Appendix 1 to the report.

Background

2. The Terms of Reference for the Committee require the Committee to assist Council in developing, monitoring and reviewing strategies, policies, plans and functions associated with environmental and climate change activities.
3. The Forward Programme for 2025 provides a planning tool for both members and officers to co-ordinate programmes of work for the year. The Forward Programme is attached as Appendix 1 to the report.

Forward Programme

4. The Forward Programme is a working document and is subject to change on a regular basis.

Appendices

No.	Title	Page
1	Climate Change and Sustainability Committee Forward Programme 2025	41

Author: Jenny Young
Democracy Advisor

Reviewed By: Kate Glanville
Senior Democracy Advisor

Approved By: Kathryn Stannard
Head of Democratic Services

Komiti Kaupapa Taiao
Climate Change and Sustainability Committee Forward Programme 2025

Description	Author	Cycle 4 3 Sep	Pending
Regular update on climate change work	Climate, Waste and Resource Recovery	✓	
Regular update on solid waste management and minimisation work streams	Climate, Waste and Resource Recovery	✓	
Te Ara Whakamua Group work update	Climate, Waste and Resource Recovery	✓	
Annual report on progress against the Climate Action Pathway, Council's Carbon Reduction Plan and WMMP Local Action Plan	Climate, Waste and Resource Recovery	✓	
Food and green organics collection and processing <i>(to be presented to the Long-Term Plan/ Annual Plan Subcommittee before returning to the Climate Change and Sustainability Committee for further consideration)</i>	Climate, Waste and Resource Recovery		✓