



POARI HAPORI O ŌKIWINUI EASTBOURNE COMMUNITY BOARD

5 June 2026

Order Paper for the meeting to be held in the
Eastbourne Neighbourhood Hub, 38 Rimu Street, Eastbourne,
on:

Tuesday 16 June 2026 commencing at 7:15 pm

Membership

Bruce Spedding (Chair)	Ben Hainsworth
Jeremy Chaston (Deputy Chair)	Emily Keddell
Murray Gibbons	Cr Tui Lewis

For the dates and times of Council and Community Board Meetings please visit
www.huttcity.govt.nz

COMMUNITY BOARDS – FUNCTIONS AND DELEGATIONS

This document records the delegation of Council functions, responsibilities, duties, and powers to Community Boards.

The Community Boards have been established under section 49 of the Local Government Act 2002 to represent, and act as an advocate for, the interests of their community.

The delegations are expressed in general terms. The delegations shall be exercised with proper regard for the Council's strategic direction, policies, plans, Standing Orders and its interpretation of its statutory obligations. The delegations are to be read together with the following propositions.

These delegations are based on the following principles:

- Issues relevant to a specific community should be decided as closely as possible to that community. Where an issue has city-wide implications, ie any effects of the decision cross a ward or community boundary or have consequences for the city as a whole, the matter will be decided by Council after seeking a recommendation from the relevant Community Board or (any ambiguity around the interpretation of "city-wide" will be determined by the Mayor and Chief Executive in consultation with the relevant Chair);
- Efficient decision-making should be paramount;
- Conflicts of interest should be avoided and risks minimised;
- To ensure processes are free from bias and pre-determination Community Boards should not adjudicate on issues on which they have advocated or wish to advocate to Council;
- Community Boards should proactively and constructively engage with residents on local matters that affect the community they represent and raise with Council issues raised with them by their community and advocate on behalf of their community.

These delegations:

- (a) do not delegate any function, duty or power which a statute (for example section 53(3) and clause 32(1) of Schedule 7 of the Local Government Act 2002) prohibits from being delegated;
- (b) are subject to and do not affect any delegation which the Council has already made or subsequently makes to any other committee, Council officer or other member of staff;
- (c) are subject to any other statutory requirements that may apply to a particular delegation;
- (d) are subject to any notice issued by the Council, from time to time, to a Community Board that a particular issue must be referred to Council for decision;
- (e) reflect that decisions with significant financial implications should be made by Council (or a committee with delegated authority);
- (f) promote centralisation of those functions where the appropriate expertise must be ensured;
and
- (g) reflect that all statutory and legal requirements must be met.

DELEGATIONS

Decide:

- Naming new roads and alterations to street names (in the Community Board's area) within the provisions of Council's Kaupapa Here Tapanga - Naming Policy 2022-2027.
- Official naming of parks, reserves and sports grounds within the provisions of Council's Kaupapa Here Tapanga - Naming Policy 2022-2027. Note ¹
- Removal and/or planting of street trees within the provisions of Council's Operational Guide for Urban Forest Plan. Note ²
- The granting of leases and licences in terms of Council policy to voluntary organisations for Council owned properties in their local area, for example, halls, but not including the granting of leases and licences to community houses and centres.
- The granting of rights-of-way and other easements over local purpose reserves and granting of leases or licences on local purpose reserves.
- The granting of leases and licences for new activities in terms of Council policy to community and commercial organisations over recreation reserves subject to the provisions of the Reserves Act 1977 and land managed as reserve subject to the provisions of the Local Government 2002, in their local area. (Note: renewal of existing leases and licences will be reported once a year to Council's City Development Committee).
- The allocation of funding from the Community Climate Action Fund in accordance with Council's adopted guidelines.
- Expenditure of funds allocated by the Council to the Board from the Miscellaneous Budget to cover expenditure associated with the activities of the Board. The Chair to approve expenditure, in consultation with the Board, and forward appropriate documentation to the Committee Advisor for authorisation. Boards must not exceed their annual expenditure from the Miscellaneous Budget.
- The allocation of funding for the training and development of Community Board or members, including formal training courses, attendance at seminars or attendance at relevant conferences.

CONSIDER AND MAKE RECOMMENDATIONS TO COUNCIL ON:

- Particular issues notified from time to time by Council to the Community Board.
- Roading issues considered by the Mayor and Chief Executive to be strategic due to their significance on a city-wide basis, including links to the State Highway, or where their effects cross ward or community boundaries.

¹ This excludes sites that are considered high profile, significant on a city-wide basis due to their size and location, or where the site crosses ward or community boundaries.

² The Operational Guide for Urban Forest Plan is available from Council's Parks and Gardens Division.

- Parks, reserves and sports ground naming for sites that have a high profile, city-wide importance due to their size and location and/or cross ward or community boundaries.
- Representatives to any Council committee, subcommittee, subordinate decision-making body, working group, or ad hoc group on which a Community Board representative is required by Council.
- The setting, amending or revoking of speed limits in accordance with the *Hutt City Council Bylaw 2005 Speed Limits*, including the hearing of any submissions.

GENERAL FUNCTIONS

Provide their local community's input on:

- Council's Long Term Plan and/or Annual Plan.
- Council's policies, programmes (including the District Roding Programme) and bylaws.
- Changes or variations to the District Plan.
- Resource management issues which it believes are relevant to its local community, through advocacy.
- The disposal or acquisition of significant assets.
- Road safety including road safety education within its area.
- Any other issues a Board believes is relevant to its local area.
- Review Local Community Plans as required.

Reports may be prepared by the Board and presented to Council Committees, along with an officer's recommendation, for consideration.

Any submissions lodged by a Board or Committee require formal endorsement by way of resolution.

Co-ordinate with Council staff:

- Local community consultation on city-wide issues on which the Council has called for consultation.

Maintain:

- An overview of roadworks, water supply, sewerage, stormwater drainage, waste management and traffic management for its local area.
- An overview of parks, recreational facilities and community activities within its local area.

Develop:

- Community Response Plans in close consultation with the Wellington Region Emergency Management Office, emergency organisations, the community, residents' associations, other community groups, and local businesses. The Community Response Plans will be reviewed on an annual basis.

Grant:

- Local community awards.

Promote:

- Recreational facilities and opportunities in its area with a view to ensure maximum usage.

- Arts and crafts in its area.

Appoint:

- A liaison member or, where appropriate, representatives to ad hoc bodies, which are involved in community activities within the Board's area, on which a community representative is sought.

Endorse:

- Amendments to the Eastbourne Community Trust Deed (Eastbourne Community Board only).

EASTBOURNE

A STATEMENT OF BASIC PRINCIPLES

The Eastbourne Community Board, representing the people of Eastbourne;

Recognises that we are part of a community living in a unique environment,

Believes that we have been entrusted with the care of an environment which is a major asset of the Wellington region,

Desires to conserve and enhance this asset for the enjoyment of future generations of residents and visitors, and therefore;

Acknowledges and promotes the key characteristics of Eastbourne and the Bays as:

1. A community situated on the coast of Wellington harbour, bounded by the sea on the one side and on the other by bush-clad hills;
2. A community comprising a string of smaller communities, with residential areas of low-rise, low-density housing, interspersed with many trees;
3. A community in which the citizens care and respect each other's differences and right to quiet enjoyment of their surroundings;
4. A community where industry and commerce have developed without detriment to the natural environment;
5. A community where the arts are valued and where participation in theatre, painting, pottery, music, gardening and sports is actively fostered and encouraged ;
6. A community concerned for the welfare of the young and the old where the elderly may retire in dignity, where families have access to facilities to raise their children in an environment which promotes safety and well-being;
7. A community which values and encourages preservation of its heritage and history.

Further:

It is our stated intent that the recognition of these principles and acceptance of the key characteristics will underlie the activities which we as a community and board undertake, and that they will provide the criteria against which, and within which, any district plans, strategic plans or developmental or organisational initiatives may be assessed.

HUTT CITY COUNCIL

POARI HAPORI O ŌKIWINUI
EASTBOURNE COMMUNITY BOARD

Meeting to be held in the Eastbourne Neighbourhood Hub, 38 Rimu Street, Eastbourne

on

Tuesday 16 June 2026 commencing at 7:15 pm.

ORDER PAPER

PUBLIC BUSINESS

1. OPENING FORMALITIES - KARAKIA KAUNIHERA

Tuia te mana akiaki	<i>Sow the seeds of courage</i>
Rarangahia te mana	<i>Weave the power of unity</i>
rangatira	<i>To grow and prosper</i>
Kia tipu, kia puāwai	<i>There are ripples in</i>
E ripo ngā wai	<i>Te Awa Kairangi</i>
O Te Awa Kairangi	<i>There are Kaitiaki on the land</i>
He Kaitiaki ki te whenua	<i>Protected environment</i>
He oranga taiao	<i>Thriving people</i>
He oranga tangata	

Connected, united, affirmed!

Haumi e, hui e Taiki e!

2. APOLOGIES

No apologies have been received.

3. PUBLIC COMMENT

Generally up to 30 minutes is set aside for public comment (three minutes per speaker). Speakers may be asked questions on the matters they raise.

4. PRESENTATION

Local Councillors from Greater Wellington Regional Council

A verbal update by Crs Quentin Duthie and Nigel Elder.

5. CONFLICT OF INTEREST DECLARATIONS

Members are reminded of the need to be vigilant to stand aside from decision making when a conflict arises between their role as a member and any private or other external interest they might have.

6. MINUTES

Meeting minutes Eastbourne Community Board, 14 April 2026

7. **REPORT REFERRED FOR BOARD INPUT BEFORE BEING CONSIDERED BY COMMITTEE OF COUNCIL**

Shared Path Transition: Sunshine Bay to Days Bay

Report No. ECB2026/3/139 by the Head of Transport 15

8. **CHAIR'S REPORT**

Report No. ECB2026/3/39 by the Chair 20

9. **DEMOCRACY ADVISOR'S REPORT**

Report No. ECB2026/3/13 by the Democracy Advisor 24

10. **REPORT BACK FROM REPRESENTATIVES ON LOCAL ORGANISATIONS**

Report No. ECB2026/3/40 by the Democracy Advisor 30

11. **QUESTIONS**

With reference to section 32 of Standing Orders, before putting a question a member shall endeavour to obtain the information. Questions shall be concise and in writing and handed to the Chair prior to the commencement of the meeting.

12. **CLOSING FORMALITIES - KARAKIA WHAKAMUTUNGA**

Unuhia!	<i>Release us from the supreme sacredness of our</i>
Unuhia!	<i>tasks</i>
Unuhia i te uru-tapu-nui	<i>To be clear and free</i>
Kia wātea, kia māmā	<i>in heart, body and soul in our continuing</i>
Te ngākau, te tinana, te	<i>journey</i>
wairua i te ara takatū	<i>Oh Rongo, raise these words up high</i>
Koia rā e Rongo	<i>so that we be cleansed and be free,</i>
whakairihia ake ki runga	<i>Yes indeed, we are free!</i>
Kia wātea, kia wātea!	<i>Good and peaceful</i>
Ae rā, kua wātea!	
Hau, pai mārire.	

Jenny Young
DEMOCRACY ADVISOR

HUTT CITY COUNCILPOARI HAPORI O ŌKIWINUI | EASTBOURNE COMMUNITY BOARD

Minutes of a meeting held in the Eastbourne Neighbourhood Hub, 38 Rimu Street,
Eastbourne, on

Tuesday 14 April 2026 commencing at 7:15 pm

PRESENT: B Spedding (Chair) B Hainsworth
J Chaston Cr T Lewis
M Gibbons

APOLOGIES: E Keddell

IN ATTENDANCE: J Kingsbury, Director Economy and Development
K Yung, Hutt City Council Elected Member
J Young, Democracy Advisor

PUBLIC BUSINESS**1. OPENING FORMALITIES - KARAKIA KAUNIHERA**

Tuia te mana akiaki	<i>Sow the seeds of courage</i>
Rarangahia te mana rangatira	<i>Weave the power of unity</i>
Kia tipu, kia puāwai	<i>To grow and prosper</i>
E ripo ngā wai	<i>There are ripples in</i>
O Te Awa Kairangi	<i>Te Awa Kairangi</i>
He Kaitiaki ki te whenua	<i>There are Kaitiaki on the land</i>
He oranga taiao	<i>Protected environment</i>
He oranga tangata	<i>Thriving people</i>
Haumi e, hui e Taiki e!	<i>Connected, united, affirmed!</i>

2. APOLOGIES

An apology for Emily Keddell was received and noted.

Under Standing Order 16.1, the Chair allowed residents to comment on items not appearing on the agenda.

Lindsay Ancelet, on behalf of the Lowry Bay Residents' Association, raised urgent safety concerns about the lack of a pedestrian crossing at the Lowry Bay bus stop. She described a busy road where children must cross without adequate infrastructure, causing near-misses. She highlighted the recent changes, including increased foot traffic and a poorly designed bus stop, which worsened the situation, forcing children to stand close to the road or cross it unsafely. Lindsay Ancelet shared a personal incident to highlight the risks and stressed that even with adults present, crossing remained hazardous due to traffic speed and volume. She called for the urgent installation of a pedestrian crossing and improvements to the bus stop, including relocation and more space for safe waiting.

The Director Economy and Development advised that design work on pedestrian crossings would commence in the near future. He stated that no additional crossings were scheduled for delivery in the current financial year. He noted that safety specialists were assessing concerns about bus stops and that the outcomes of this assessment would inform subsequent actions. He highlighted that the Board would receive an update upon completion of the assessment.

Belinda Moss acknowledged the opening of the resilient road and shared pathway, noting the positive impact on Eastbourne residents, particularly in the Eastern Bays. She observed increased use by walkers, cyclists, and children, highlighting improved safety and community use compared with before. She noted that while the shared path created new opportunities, it also made access more difficult, as people, especially children, still needed to cross a busy road. She credited the community and previous Community Boards for advocating the project. She supported a pedestrian crossing at Lowry Bay and welcomed a safety audit of the bus stop, suggesting it be conducted after 3pm on school days to better assess safety when children disembark and wait.

3. PUBLIC COMMENT

There was no public comment.

4. PRESENTATIONS

a) Presentation by Park Ranger from Greater Wellington Regional Council

The Park Ranger (GWRC) provided a presentation, refer to the link here: [GWRC Park Ranger presentation](#)

Members discussed mountain biking provision and invasive weed management.

b) **Local Councillor from Greater Wellington Regional Council**

Cr Duthie provided a presentation, refer to the link here: [GWRC Local Councillor Update](#)

Members discussed public transport representation, ferry services, and jurisdictional responsibilities for coastal management.

The Chair expressed concern about the lack of Eastbourne representation on the public transport advisory group, particularly given the community's reliance on ferry services.

Cr Duthie acknowledged the concern and offered to connect the Board with Lower Hutt representatives on the group.

5. **CONFLICT OF INTEREST DECLARATIONS**

There were no conflicts of interest.

6. MINUTES

The Chair foreshadowed an amendment to the unconfirmed minutes concerning the public comment made by Susan Ewart, as set out below:

Susan Ewart, representing the York Bay Residents' Association, spoke about several lengthy water outages affecting York Bay over the past 12 months. She advised that during a significant outage in January 2026, no water tanker was provided, and Wellington Water Limited provided no information on the estimated duration of the outage. Susan Ewart also noted that Council had advised in 2025 that while it knew the pipes in York Bay needed replacement, there was no budget for this work.

The Chair provided comment in relation to matters raised during public comment at the meeting held on 24 February 2026.

The Chair noted that the matter raised by Susan Ewart had been submitted to Council and no response had yet been received. He further noted that non-governance water issues can be logged through the "Report a Problem" system, with requests triaged to Council officers, Wellington Water Limited, or the new water entity from 1 July 2025, depending on responsibility.

Adrian Moonen raised concerns about the fire sirens. The Chair acknowledged the issue had affected the community for many years and advised that investigations were ongoing. It was noted that mobile phone reception across the bays was unreliable, so alternative notification methods for firefighter callouts would still be required.

Heather McLean spoke about storm damage to the fences following the February 2026 storm. The Chair advised that Council had removed damaged sections of the fence and confirmed that the fences would not be reinstated. Heather McLean also raised concerns about agapanthus on the dunes, which the Chair confirmed had been referred to Council officers.

RESOLVED: (B Spedding/J Chaston)

Minute No. ECB 26204

"That the minutes of the meeting of the Eastbourne Community Board held on Tuesday, 24 February 2026, be confirmed as a true and correct record, subject to an amendment to the public comment by Susan Ewart to accurately reflect her statements regarding water outages in York Bay."

7. CHAIR'S REPORT

Report No. ECB2026/2/22 by the Chair of the Eastbourne Community Board

RESOLVED: (B Spedding/Cr T Lewis)

Minute No. ECB 26205

"That the report be received and noted."

8. DEMOCRACY ADVISOR'S REPORT

Report No. ECB2026/2/10 by the Democracy Advisor

Cr Lewis highlighted current Council consultations, including the Public Places and Trading Bylaw and the Annual Plan. She noted financial pressures, a review of community assets, and changes to rating structures, including removing water services from rates and moving to separate charging. She encouraged reviewing the consultation material and providing feedback.

RESOLVED: (B Spedding/B Hainsworth)

Minute No. ECB 26206

"That the Board:

- (1) notes and receives the report;*
- (2) approves up to \$200 from its operational budget for a wreath for the Eastbourne ANZAC Day event on 25 April 2026."*

9. REPORTS FROM REPRESENTATIVES ON LOCAL ORGANISATIONS

Report back from representatives for local organisations

Report No. ECB2026/2/23 by the Democracy Advisor

a) Okiwi Eastbourne - Bays Community Trust (The Trust)

Murray Gibbons provided an update, noting that the Trust had funded a drone for community use. It was also reported that funds held in trust from the former Horticultural Society may be used to enhance landscaping around the sports and recreation facilities. Proposed improvements include upgrading pathways, improving visibility at pinch points, and developing small garden areas. Initial concept plans have been prepared and shared, focusing on cost-effective improvements. Progress on pathway works was noted, with sections expected to be accessible in the near term.

b) MIRO

Jeremy Chaston provided an update on MIRO activities, including the takeover of penguin-monitoring responsibilities following the completion of the shared path project. Planned work included securing trap sites, tidying areas affected by informal structures, and continuing predator control efforts. MIRO had also been approached about potential involvement in future beach clean-up coordination.

c) **Eastern Bays Climate Response Network**

The Chair reported that a recent “Watts Inside” event, delivered in partnership with Electrify the Hutt, showcased homes powered by solar energy and electrification technologies. The event was well attended and gave residents the opportunity to learn from others’ experiences. It was noted that the model may be replicated and shared with other communities.

d) **Eastbourne Youth Worker Trust**

The Chair read out the update prepared by Emily Keddell and reported on youth initiatives, including the closure of the current Friday night “Loft” programme for Year 7 and 8 students. The programme was acknowledged for making a positive contribution to the community. It was noted that there is potential to develop a new or adapted youth offering in the future, and community members were encouraged to contribute ideas.

e) **Eastern Bays Residents’ Associations**

Ben Hainsworth provided an update, noting strong community interest in the shared path's opening. It was also reported that recent discussions had focused on pedestrian safety, including the Lowry Bay crossing. Community engagement activities, including a York Bay Residents Association event, were noted as well-attended and valuable for strengthening local connections. Positive feedback was given on recent infrastructure works at Point Howard, including effective communication and site reinstatement.

f) **Wellington Region Emergency Management Office**

The Chair provided an update on recent emergency management activity, including responses to recent weather events. It was noted that preparedness measures were effective and that maintaining a proactive approach was valuable. Work was underway to strengthen local civil defence capability in Eastbourne, including consideration of establishing a dedicated local group. A trial of a new emergency communications system (Meshtastic) was underway in partnership with Massey University, providing a resilient network that can operate independently of standard infrastructure.

10. **QUESTIONS**

There were no questions.

11. **CLOSING FORMALITIES - KARAKIA WHAKAMUTUNGA**

Unuhia!	<i>Release us from the supreme sacredness of our tasks</i>
Unuhia!	<i>To be clear and free</i>
Unuhia i te uru-tapu-nui	<i>in heart, body and soul in our continuing journey</i>
Kia wātea, kia māmā	<i>Oh Rongo, raise these words up high</i>
Te ngākau, te tinana, te wairua i te	<i>so that we be cleansed and be free,</i>
ara takatū	<i>Yes indeed, we are free!</i>
Koia rā e Rongo whakairihia ake ki	<i>Good and peaceful</i>
runga	
Kia wātea, kia wātea!	
Ae rā, kua wātea!	
Hau, pai mārire.	

There being no further business, the Chair declared the meeting closed at 8.52 pm.

B Spedding
CHAIR

CONFIRMED as a true and correct record
Dated this 16th day of June 2026

Copy: Eastbourne Community Board

Report no: ECB2026/3/139

Shared Path Transition: Sunshine Bay to Days Bay

Purpose of Report

1. To seek approval for the construction of a shared use path between Sunshine Bay and the Days Bay timber boardwalk, and to implement the detailed design for a further extension of the shared path to an approximate point opposite Ferry Road.

Recommendations

That the Infrastructure and Regulatory Committee recommends that Council:

- (1) receives and notes the report;
- (2) approves the construction of a shared use path from Sunshine Bay to the Days Bay timber boardwalk; and
- (3) approves undertaking the detailed design of the shared use path extension to a point opposite Ferry Road.

For the reasons outlined in this report.

Background

2. The Tupua Horo Nuku (Eastern Bays) shared path is a 4.4km shared use path extending between Point Howard to the north and Windy Point to the south. The project included building resilience along Marine Drive through the construction of a new seawall, as well as the shared path and associated animal habitats.
3. The project excluded the section between the Sunshine Bay/Days Bay boundary to the north and Waerenga Road to the south. This enabled the wider project to receive funding under the government's shovel-ready programme of works.
4. An interim path has been provided between Sunshine Bay and the Days Bay timber boardwalk.

Discussion

5. The provision of an improved link between Sunshine Bay and Days Bay has been considered as two separate sections due to the differing levels of construction complexity. The first section extends from Sunshine Bay to the existing timber boardwalk outside 603 Marine Drive, and the second section continues to approximately opposite Ferry Road.

Sunshine Bay to Existing Days Bay Timber Boardwalk

6. Several options have been considered, including a raised shared path to provide separation for path users. However, a raised shared path has been discounted as it would create drainage maintenance issues and inhibit access to adjacent properties.
7. An “at grade” option is preferred, as shown in Appendix 1 to this report. This option maintains a 3.0m wide shared use path through to the timber boardwalk. Separation between the path and the roadway is provided by concrete buffers, which are consistent with the recently constructed path. Gaps incorporating low-speed humps will maintain access to adjacent properties.
8. The introduction of the shared use path between Sunshine Bay and the timber boardwalk will result in changes to parking. There is currently no defined parking layout within the existing hatched area, and parking is used in an adhoc manner. The proposed layout will introduce five perpendicular car parks near the Wellington Water pumping station, and four parallel car parks adjoining the existing carparks near the existing timber boardwalk. This will result in an estimated net loss of one carpark.
9. It is proposed to install “Please dismount from bike and walk” signage at either end of the boardwalk. This signage will remain in place until the boardwalk is upgraded.

Timber Boardwalk to Opposite Ferry Road

10. The existing timber boardwalk is not suitable for shared path use, as its narrow 1.1m width is insufficient for bicycles travelling in opposite directions to pass safely.
11. It is proposed to raise the path from the existing boardwalk level to road level and continue the shared path to a position just north of the culvert outfall opposite the car park at Ferry Road. This location has been selected as it provides a suitable crossing point for shared path users.
12. This layout will require the existing northbound bus stop to be relocated.
13. The detailed design will consider a range of construction options, including the use of concrete seawall blocks or a cantilevered path. Improving resilience and reducing future maintenance costs will be key considerations in the design process. A concept layout is shown in Appendix 2 to this report.
14. Any required consenting will be undertaken as the design progresses.

Options

15. The options for the Committee are to:
- a. Retain the existing layout with no changes;
 - b. Approve the proposed recommendations as stated; or
 - c. Amend the proposed recommendations as the Committee considers appropriate before making recommendations to Council.
16. Officers recommend option (b), as the proposed improvements will enhance road safety and provide safer conditions for pedestrians and cyclists using the shared path.

Climate Change Impact and Considerations

17. The matters addressed in this report have been considered in accordance with the process set out in Council's Climate Change Considerations Guide.

Consultation

18. Consultation on the section between Sunshine Bay and the timber boardwalk is currently being undertaken, and feedback will be made available shortly.
19. Consultation on the timber boardwalk upgrade will be undertaken as part of the design process.
20. The report is being presented to the Eastbourne Community Board at its meeting on 16 June 2026.

Legal Considerations

21. There are no legal considerations.

Financial Considerations

22. Funding for the section between Sunshine Bay and the timber boardwalk will be met through Council's existing Traffic Safety Improvements budget. Construction costs are estimated at \$200,000.
23. Funding for the timber boardwalk replacement will be met through Council's existing Transport Resilience budget.

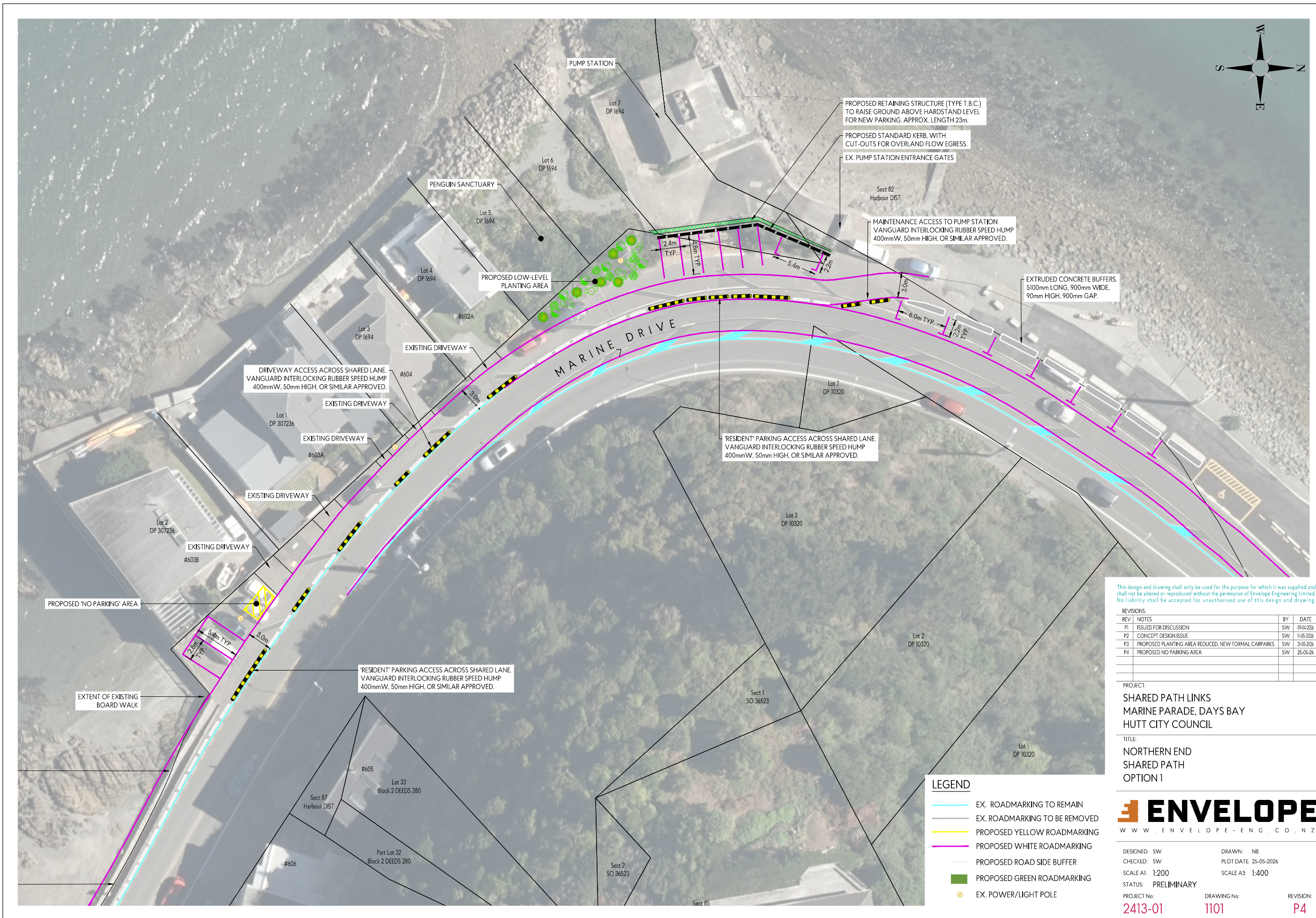
Appendices

No.	Title	Page
1	Sunshine Bay to Timber Boardwalk	18
2	Timber Boardwalk Replacement	19

Author: Paul Hewitt
Head of Transport

Reviewed By: Andrea Mitchell
Business Manager – Transport

Approved By: Jon Kingsbury
Director Economy & Development



This design and drawing shall only be used for the purpose for which it was supplied and shall not be altered or reproduced without the permission of Envelope Engineering Limited. No liability shall be accepted for unauthorised use of this design and drawing.

REVISIONS:

REV	NOTES	BY	DATE
P1	ISSUED FOR DISCUSSION	SW	09-04-2026
P2	CONCEPT DESIGN ISSUE	SW	11-05-2026
P3	PROPOSED PLANTING AREA REDUCED, NEW FORMAL CARPARKS	SW	21-05-2026
P4	PROPOSED NO PARKING AREA	SW	25-05-26

PROJECT:
 SHARED PATH LINKS
 MARINE PARADE, DAYS BAY
 HUTT CITY COUNCIL

TITLE:
 NORTHERN END
 SHARED PATH
 OPTION 1

- LEGEND**
- EX. ROADMARKING TO REMAIN
 - EX. ROADMARKING TO BE REMOVED
 - PROPOSED YELLOW ROADMARKING
 - PROPOSED WHITE ROADMARKING
 - PROPOSED ROAD SIDE BUFFER
 - PROPOSED GREEN ROADMARKING
 - EX. POWER/LIGHT POLE

ENVELOPE
 WWW.ENVELOPE-ENG.CO.NZ

DESIGNED: SW DRAWN: NB
 CHECKED: SW PLOT DATE: 25-05-2026
 SCALE A1: 1:200 SCALE A3: 1:400
 STATUS: PRELIMINARY
 PROJECT No: **2413-01** DRAWING No: **1101** REVISION: **P4**



LEGEND

- EX. ROADMARKING TO REMAIN
- EX. ROADMARKING TO BE REMOVED
- PROPOSED YELLOW ROADMARKING
- PROPOSED WHITE ROADMARKING
- PROPOSED ROAD SIDE BUFFER
- PROPOSED GREEN ROADMARKING
- EX. POWER/LIGHT POLE

This design and drawing shall only be used for the purpose for which it was supplied and shall not be altered or reproduced without the permission of Envelope Engineering Limited. No liability shall be accepted for unauthorised use of this design and drawing.

REVISIONS:

REV	NOTES	BY	DATE
P1	ISSUED FOR DISCUSSION	SW	09-04-2025
P2	CONCEPT DESIGN ISSUE	SW	11-05-2025

PROJECT:
**SHARED PATH LINKS
 MARINE PARADE, DAYS BAY
 HUTT CITY COUNCIL**

TITLE:
**SHARED PATH
 MEDIAN CROSSING**



DESIGNED: SW	DRAWN: NB
CHECKED: SW	PLOT DATE: 12-05-2025
SCALE A1: 1:200	SCALE A3: 1:400
STATUS: PRELIMINARY	
PROJECT No: 2413-01	DRAWING No: 1202
	REVISION: P2

19 May 2026
Report no: ECB2026/3/39

Chair's Report

Recommendation

That the report be received and noted.

Appendices

No.	Title	Page
1↓	Appendix 1: ECB Chair's report	21

Author: B Spedding
 Chair

Eastbourne Community Board Chair's Report June 2026

Opening of Te Ara Tupua and celebration of Tupua Horo Nuku

The opening of **Te Ara Tupua** (Petone to Ngauranga - Resilience project and shared path) has happened and has been widely applauded, by both walkers and cyclists. We can look forward to a new phase in active mode commuting and tourism around the harbour.

The same weekend we finally had the celebrations we missed on the opening of **Tupua Horo Nuku** (Eastern Bays Resilience project and shared path), with lots for kids to do in Williams Park.

The Community Board were present, and gave away bike bells to anyone who asked (we've distributed nearly 200 so far) as well as collecting community feedback. There was some really useful input which has been passed on to the council.

Petone Foreshore

Not as prominent as the two projects above, but important none the less, the work done on the Petone Foreshore has connected the two sides of the harbour well, making the whole circuit of the harbour exceptional. There are still bottlenecks, especially the Waione Street bridge, but with the other improvements completed the focus and justification for closing the remaining gaps is stronger than ever.

Seaview Marina

Another "gap" is the transition through the marina. We have provided input into improving this section and hope to see some changes soon. The goal is to make the route safer and easier while preserving the marina experience and supporting the businesses on site.

Sunshine Bay to Days Bay - the missing link.

Not surprisingly, the "completion" of the path (yes there are still details and work) brought the missing link into prominence, with comments and suggestions on social media, emails and in person. Thanks to all those who provided constructive feedback. We are working with council to make the corner safer, and working towards extending path around the boardwalk section into the bay. The transition through the bay itself has thrown up many suggestions and hopefully will be open for public discussion in the near future.

2026 ECB Walkaround

We recently had our annual walkaround to talk to bays residents about local concerns. Thank for the support, we will be collating the issues and suggestions to pass on to HCC and GWRC where appropriate and will share these with those concerned. Access on and off the new path, stormwater management and traffic safety on the hill roads seem to be the main themes.

Thanks to Ben Hainsworth for organising this, and Murray Gibbons for arranging transport. Let Ben know if you have anything to add (Ben.Hainsworth@huttcity.govt.nz).

Burdan's Gate pump track

Jeremy Chaston has reported on progress in the latest Eastbourne Herald, including a concept design. Jeremy is also keen to see new events which make use of the new shared paths, so contact him if you have ideas. (Jeremy.Chaston@huttcity.govt.nz)

Gollan's Valley

Interest is growing on the future of Gollans Valley, with residents keen to share ideas and get involved. You can join MIRO (miro.org.nz) or register with Harbour to Headlands (h2h.kiwi.nz). We have been getting feedback on future possibilities and are working to have more public information and engagement available soon.

Heritage Trail Jail and trail extensions

Murray Gibbons has drafted up a new concept for the historic jail location at Rona Bay Wharf as part our heritage trail, and is also exploring extending the current Heritage Trail around the bays along the new path. With many new stops along the way the opportunity for historic and cultural information is extensive. Contact Murray (Murray.Gibbons@huttcity.govt.nz)

The Loft

Dropping attendance at The Loft has led to closure in it's current form. Led by Emily Keddell the Community Board explored new options for youth engagement last year, and we are hoping to find a way forward in conjunction with the Eastbourne Youth Worker Trust who supported the Loft and are also in favour of continuing in some form if possible. (Emily.Keddell@huttcity.govt.nz)

Community Resilience and Emergency Management

New Zealand is currently experiencing extreme weather events and severe storms at an unprecedented frequency of roughly once every 8 days. A priority for the community and the Community Board is resilience, and we are exploring several options to improve the preparedness and planning in this context.

We currently have two Emergency Water Stations in the bays, one in Lowry Bay, the other in Days Bay. These are intended to provide some of our community water needs in the event of a disaster disrupting our normal supply, but only after about 8 days (we are expected to be self-supporting until then).

Tiaki Wai (Wellington Water) are planning to run a training session later in the year to enable the community to operate these ourselves, so we will be looking for volunteers from both these bays but also one or two from other areas as well, so if you are interested, please get in touch. We are also looking to re-establish a civil defence group in Eastbourne itself. Most of the bays have designated people or groups and a plan through their formal or informal Residents Associations, but Eastbourne currently does not. If you are interested in being involved please contact me (Bruce.Spedding@huttcity.govt.nz).

Community Survey

As noted previously, we are planning to update our Community Survey, last completed in 2014. We have already received suggestions on community priorities for the next 10 years but are keen to hear more. In 2014 respondents were asked to rank their three top issues and also to identify the single most important issue for them. The completion of the Eastern Bays shared walk/cycle way was clearly the most important issue (number one for 33 percent of respondents) with concern about climate change and extreme weather events next (16 percent of respondents). Safety in the community, clean seas for swimming and quality public transport were also highly ranked. A number of other local issues were also identified. Full 2014 survey and contact details (Eastbourne.nz/Survey2026)

Bruce Spedding

June 2026

Report no: ECB2026/3/13

Democracy Advisor's Report

Purpose of Report

1. The purpose of the report is to update the Board on items of interest.

Recommendation

That the Board:

- (1) notes and receives the report;
- (2) retrospectively approves \$94.09 from its operating budget for the purchase of bike bells for the opening of the Te Ara Tupua shared pathway on Saturday, 16 May 2026; and
- (3) retrospectively approves \$178.26 from its operating budget for the hire of a van for the Board's annual community walkaround on 23 May 2026.

Update from the previous meeting held on 14 April 2026

2. During the meeting on 14 April 2026, the Chair expressed concern about the lack of Eastbourne representation on the Greater Wellington Regional Council's (GWRC) public transport advisory group, particularly given the community's reliance on ferry services. Cr Duthie acknowledged the concern and offered to connect the Board with Lower Hutt representatives on the group.
3. In response to Lindsay Ancelet, who spoke during public comment and raised safety concerns about the lack of a pedestrian crossing at the Lowry Bay bus stop, the Director Economy and Development advised that safety specialists were assessing concerns about bus stops and that the outcomes of this assessment would inform subsequent actions. He also noted that the Board would receive an update upon completion of the assessment.

Annual Plan Update

4. On 13 May 2026, Council considered feedback from public engagement on the Draft Annual Plan 2026-27. Public feedback highlighted key concerns about rates affordability, the cost of living, and ongoing rates increases. People also emphasised the need for Council to prioritise reducing non-essential services while continuing to invest in essential infrastructure, and to provide reassurance that difficult decisions are being made to help bring rates down.
5. There were 672 website visitors, with 167 contributions through our 'Have Your Say' platform, six emailed submissions, and 31 pieces of feedback collected by elected members. Elected members agreed to a projected 8.8% rates revenue increase including a 0.9% growth assumption for 2026/27. Council will consider the final Annual Plan for adoption on 30 June 2026.

Te Whiringa

6. [Te Whiringa](#) – Council's Engagement Framework was adopted by Council in December 2025 and establishes the foundation for more consistent, inclusive and participatory community engagement. Implementation work is underway across the organisation, including development of supporting guidance, staff capability initiatives, and processes to support high-quality engagement practice.
7. Implementation of the Te Whiringa Action Plan is progressing across all six focus areas and is already influencing engagement approaches for the upcoming Long Term Plan, including more participatory methods. A strong strategic engagement approach will be increasingly important as Council navigates significant Long Term Plan decisions and the broader local government reform environment over the next 12–18 months.
8. The Quarterly Report is available here: [Te Whiringa | Our Engagement Framework Quarterly Report | Jan - Mar 2026](#)

Tō Tātou Tāone 2055 – Our City 2055

9. Tō Tātou Tāone 2055 – Our City 2055 is a shared strategy for the future of Te Awa Kairangi ki Tai Lower Hutt. It brings together the voices of residents, mana whenua, community organisations, businesses, public agencies and city leaders to set a shared vision of Te Awa Kairangi ki Tai Lower Hutt in 2055.
10. The strategy is now in its final stages, with planning underway for its launch and implementation. Council is working with partners and communities to develop a launch that builds awareness of the strategy and encourages people to see how they can help bring it to life.
11. Implementation will then look at how the strategy can be embedded across the city, including opportunities to connect with Community Boards in ways that are useful and relevant to local communities. Officers welcome the opportunity to discuss this with the Boards in more detail once work progresses.

Tiaki Wai

12. Work to progress the transition of water services to Tiaki Wai for 1 July 2026 continues. Hutt City, Upper Hutt City, Wellington City, Porirua City and Greater Wellington Regional Councils have all approved their transfer agreements.
13. The Tiaki Wai | Partners' Committee met on 29 May 2026 to consider public feedback on the draft Water Services Strategy for FY 26-27, with the Tiaki Wai Board working towards finalising the strategy in June 2026.
14. Tiaki Wai has increased its public visibility in the last few weeks, with awareness campaigns on social media, radio and bus backs. This is to inform the public about the change to the delivery of water services in the region, including how water is billed.

Main Outfall Pipe essential maintenance

15. Wellington Water Limited (WWL) is undertaking essential maintenance on the 18km-long Main Outfall Pipe, which carries fully treated wastewater from the Seaview Wastewater Treatment Plant to Pencarrow Heads, where it is discharged into the sea. This maintenance was prompted by recent leaks from the pipe. The resource consent issued by Greater Wellington Regional Council allows for a shutdown of the pipe once a year for up to six weeks, between May and July 2026, for maintenance. A planned extended shutdown of this nature has not been undertaken for some time.
16. The Main Outfall Pipe was shut down from Monday 25 May 2026 and is due to reopen in early July 2026 at the latest. To enable the maintenance work, the pipe will need to be completely drained. During this process, fully treated wastewater will be discharged from the scour valves along the coastline. Throughout the maintenance period, fully treated wastewater will also be discharged into the Waiwhetū Stream.
17. Traffic management will be required for parts of the work programme. Officers are working closely with WWL to minimise disruption to the Eastbourne community.

Community and Engagement Update

Expressions of Interest for Council Bookable spaces

18. An Expressions of Interest process for was run recently for regular bookings of Council hub and hall spaces for 2027/2028 via Council's Bookable software system.
19. The process was open to both current hirers and new applicants, to support fair and equitable access to Council venues in line with the Venue Hire Principles adopted under the Long Term Plan 2024.
20. Submissions closed at midnight on Sunday 31 May 2026, and outcomes will be shared by 30 June 2026.

Office space available at Eastbourne Neighbourhood Hub

21. For lease: Newly renovated office space with harbour views. Room 7 – 38-40 Rimu Street, Eastbourne - 20.94 m².
22. This office is on the second floor above the library. The space features a newly renovated shared kitchen and toilet facilities. Additional meeting rooms are available for hire. Extra charges apply. Contact Monica Turner to arrange a viewing: Monica.Turner@huttcity.govt.nz. Please note: There is no lift. The office space can only be accessed by a stairwell.

Signage refresh for the Eastbourne Neighbourhood Hub

23. A signage refresh for the Eastbourne Neighbourhood Hub will align the exterior signage with current brand guidelines and the wider Council wayfinding across Lower Hutt. This work is expected to be completed by the end of June 2026.

Upcoming Events

24. **17 June 2026:** [Boost your Business](#) from 6.00pm at the Dowse Art Museum, 45 Laings Road, Lower Hutt. In partnership with Wellington Pasifika Business Network, Hutt City Council, and WellingtonNZ. Free, all ages workshop for aspiring entrepreneurs, start-ups, and new businesses.
25. **9 – 21 June 2026:** [Lōemis Festival](#) is a midwinter festival running for two weeks across Wellington. The programme includes music, food, immersive art, spoken word and film. Highlights include artists from New Zealand and abroad.
26. **28 June 2026:** [Live music at Days Bay Pavillion](#) from 6.00pm to 8.00pm, at Days Bay Pavilion. Performance by MFOR.

2025/2026 Operating and Training Budgets

27. The following is the Board's expenditure as of May 2026. The Board will receive a new budget from 1 July 2026.

	Miscellaneous Administration	Training
Budget	\$5,000.00	\$3,000.00
Expenditure to date	\$3,668.99	\$1,500
BALANCE	<u>\$1,331.01</u>	<u>\$1,500</u>

28. The detailed expenditure is attached as Appendix 1 to the report.

Appendices

No.	Title	Page
1 ↓	Appendix 1: ECB expenditure July 2025 to May 2026	29

Author: Jenny Young
Democracy Advisor

Reviewed By: Kate Glanville
Senior Democracy Advisor

Approved By: Kathryn Stannard
Head of Democratic Services

Eastbourne Community Board Expenditure 2025/2026 - Operating Budget															
Item	July	August	September	October	November	December	January	February	March	April	May	June	Total per item	Balance	
Opening Balance														\$ 5,000.00	
Advertising	\$ 970.00	\$ 247.00	\$ 247.00	\$ 247.00	\$ 247.00	\$ 247.00	\$ 247.00	\$ 247.00		\$ 247.00			\$ 2,946.00		
The Eastbournes													\$ -		
Venue hire			\$ 80.00			\$ 80.00							\$ 160.00		
Other operating costs		\$ 110.64	\$ 60.00								\$ 94.09		\$ 264.73		
Annual Walkaround											\$ 178.26		\$ 178.26		
ANZAC Event											\$ 120.00		\$ 120.00		
Total Expenditure														\$ 3,668.99	
Closing Balance														\$ 1,331.01	

Eastbourne Community Board Expenditure 2025/2026 - Training Budget															
Item	July	August	September	October	November	December	January	February	March	April	May	June	Total per item	Balance	
Opening Balance														\$ 3,000.00	
Community Board conference								\$ 1,500.00					\$ 1,500.00		
Closing Balance														\$ 1,500.00	

19 May 2026

Report no: ECB2026/3/40

Report back from representatives for local organisations

a) **Okiwi Eastbourne - Bays Community Trust**

Verbal update from M Gibbons

b) **MIRO**

Verbal update from J Chaston

c) **Eastern Bays Climate Response Network**

Verbal update from the Chair

d) **Eastbourne Youth Worker Trust**

Verbal update from E Keddell

e) **Eastern Bays Residents' Associations**

Verbal update from B Hainsworth

f) **Wellington Region Emergency Management Office**

Verbal update from the Chair

Appendices

There are no appendices for this report.

Author: Jenny Young
Democracy Advisor